

KINTEK®


COMPONENTI INNOVATIVI TECNOMECCANICI

 **TOOLHOLDERS FOR CNC LATHES
(BMT, BOLT-ON, VDI DIN69880)**

 **PORTAUTENSILI PER TORNII CNC
(BMT, BOLT-ON, VDI DIN69880)**

 **CNC-DREHEMASCHINEN
(BMT, BOLT-ON, VDI DIN69880)**

 **PORTE-OUTILS POUR TOURS CNC
(BMT, BOLT-ON, VDI DIN69880)**

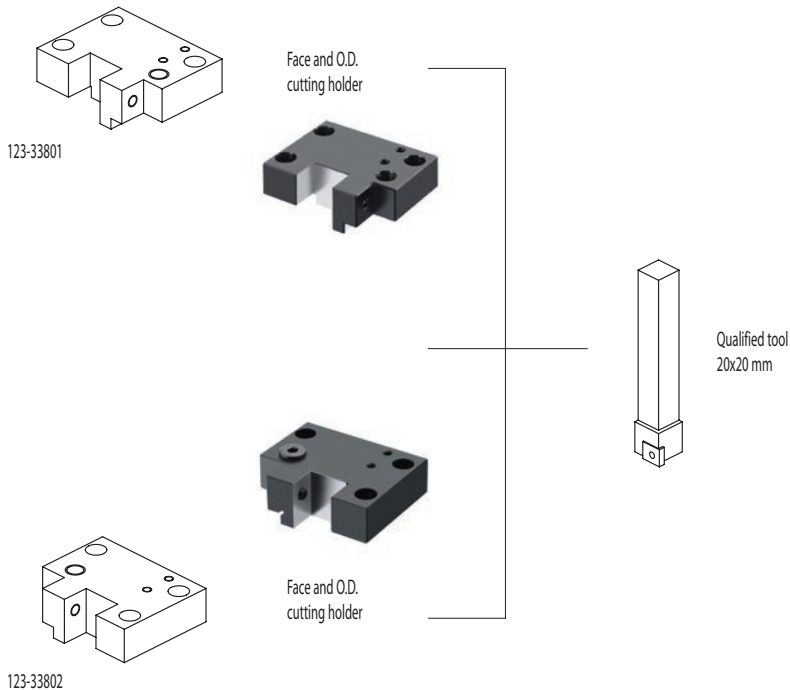
 **РЕЗЦЕДЕРЖАТЕЛИ ДЛЯ
ТОКАРНЫХ СТАНКОВ С ЧПУ
(BMT, BOLT-ON, VDI DIN69880)**

 **数控车床刀柄
BMT, BOLT-ON, VDI DIN69880**

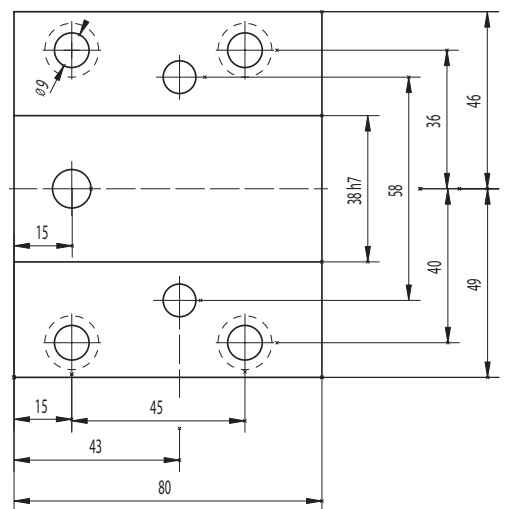
MAZAK

TOOLHOLDERS FOR CNC MACHINES

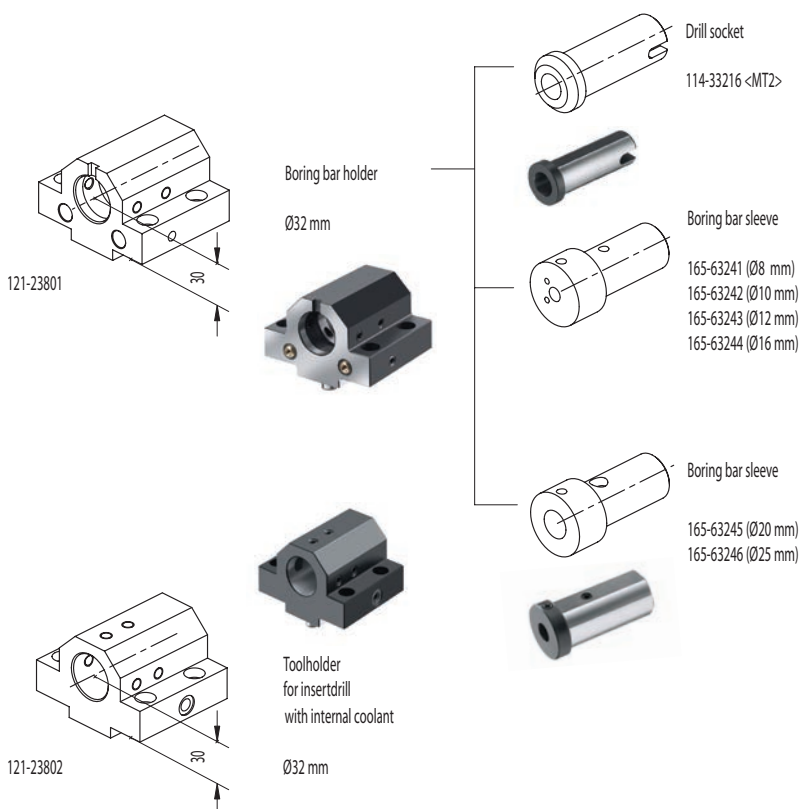
MAZAK NEXUS SQT100/150



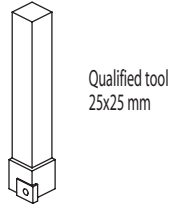
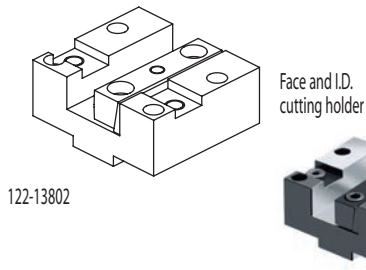
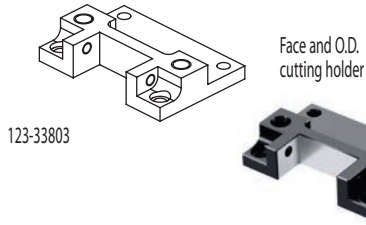
CONNECTION



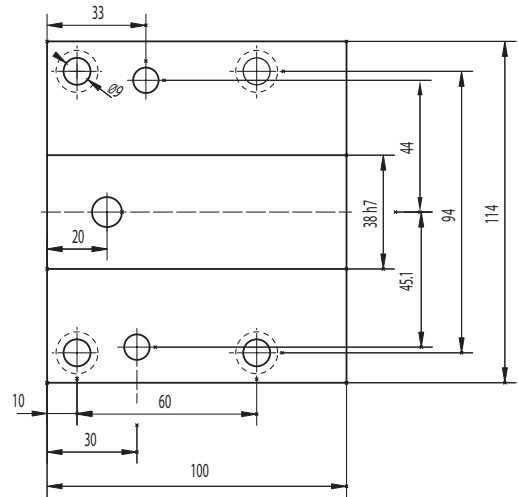
ACCESSORIES



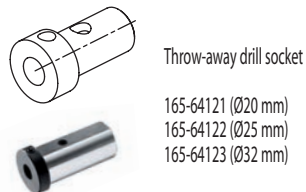
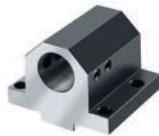
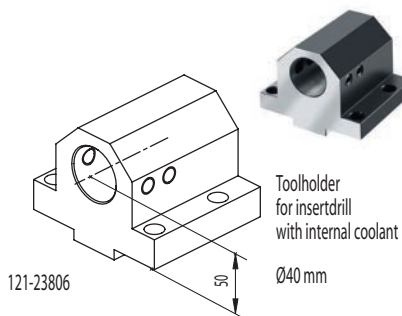
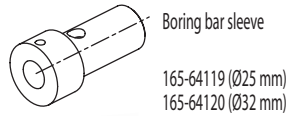
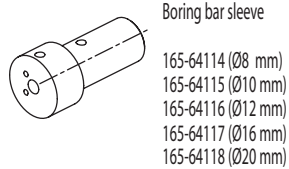
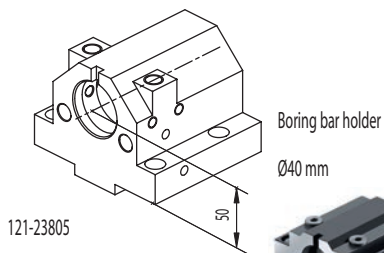
MAZAK NEXUS QTN200/250



CONNECTION



ACCESSORIES

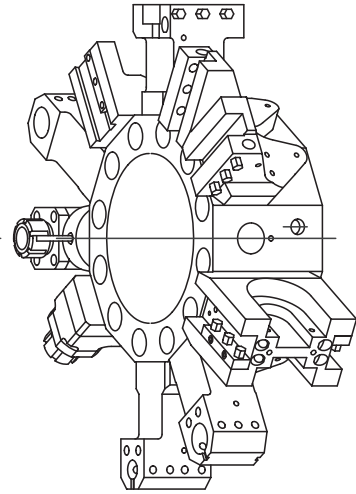
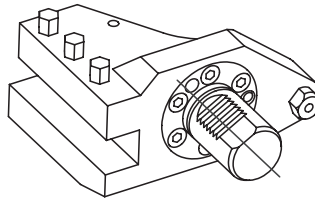
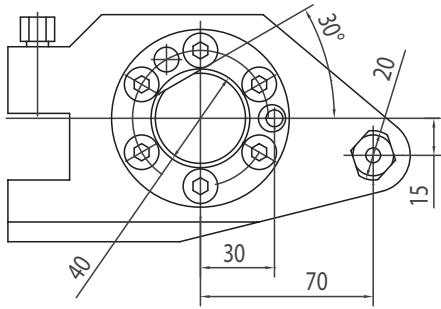


MAZAK SQT

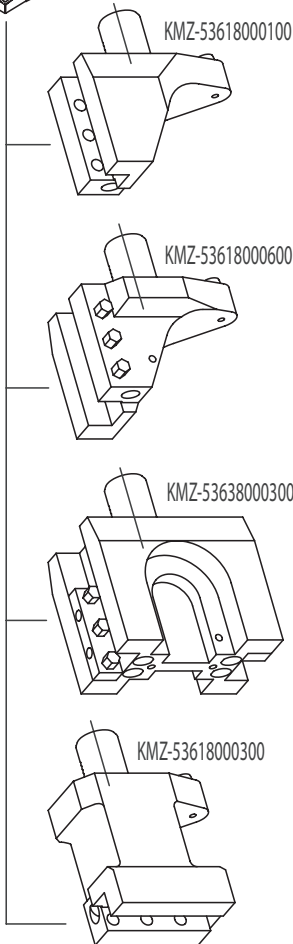
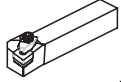
SQT 15, SQT 18 M / MS - 12 Stations
SQT 200, SQT 250 M / MS - 12 Stations

MAZAK QTN (VDI40)

QTN 200, QTN 250 M / MB / MS / MY / MSY - 12 Stations



Qualified tool
25x25 mm



ACCESSORIES

Drill socket

- 114-34015 <MT1>
- 114-34016 <MT2>
- 114-34017 <MT3>

Boring bar sleeve

- 165-64114 (Ø8 mm)
- 165-64115 (Ø10 mm)
- 165-64116 (Ø12 mm)
- 165-64117 (Ø16 mm)
- 165-64118 (Ø20 mm)

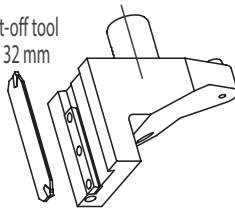
Boring bar sleeve

- 165-64119 (Ø25 mm)
- 165-64120 (Ø32 mm)

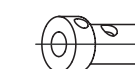
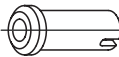
Throw-away drill socket

- 165-64121 (Ø20 mm)
- 165-64122 (Ø25 mm)
- 165-64123 (Ø32 mm)

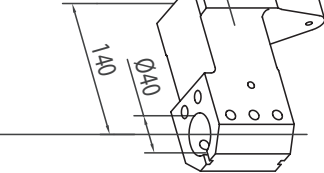
Cut-off tool
32 mm



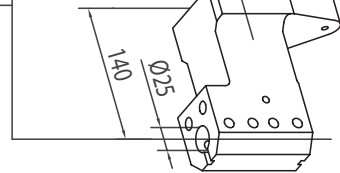
KMZ-53618000400



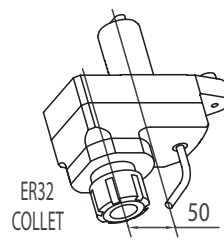
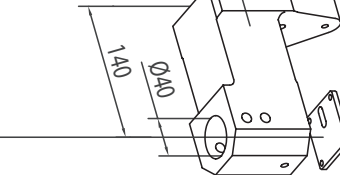
KMZ-53208005100



KMZ-53638000400

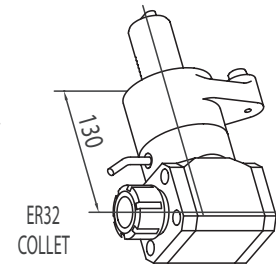


KMZ-53208005200



ER32 COLLET

116-54019



ER32 COLLET

116-54020



KINTEK®



HEAD OFFICE
KINTEK S.R.L. - MAPPANO - TORINO - ITALY



NEW PRODUCTION PLANT
A.M.T S.R.L. - CASELLE T.SE - TORINO - ITALY



MAIN PRODUCTION PLANT
KINTEK TOOLING KFT - BEKESCSABA - HUNGARY

KINTEK s.r.l.

Via Goretta 88/G - 10079 MAPPANO - (TO) - ITALY
Tel. +39 011 99 68 065 - Fax +39 011 99 65 662
e-mail: info@kintek.it
<http://www.kintek.it>