

KINTEK®

COMPONENTI INNOVATIVI TECNOMECCANICI

 **TOOLHOLDERS FOR CNC LATHES
(BMT, BOLT-ON, VDI DIN69880)**

 **PORTAUTENSILI PER TORNII CNC
(BMT, BOLT-ON, VDI DIN69880)**

 **CNC-DREHEMASCHINEN
(BMT, BOLT-ON, VDI DIN69880)**

 **PORTE-OUTILS POUR TOURS CNC
(BMT, BOLT-ON, VDI DIN69880)**

 **РЕЗЦЕДЕРЖАТЕЛИ ДЛЯ
ТОКАРНЫХ СТАНКОВ С ЧПУ
(BMT, BOLT-ON, VDI DIN69880)**

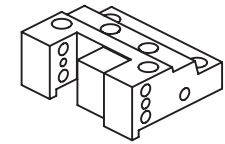
 **数控车床刀柄
BMT, BOLT-ON, VDI DIN69880**

HAAS

TOOLHOLDERS FOR CNC MACHINES

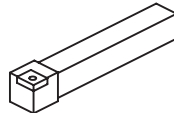
HAAS

SL20 - SL30
ST-20 - ST-25
ST-30 - ST-35
DS-30

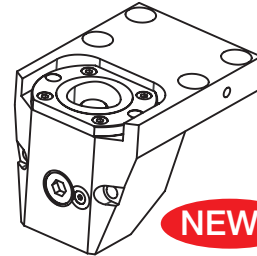


128-42011

Face and O.D. cutting holder



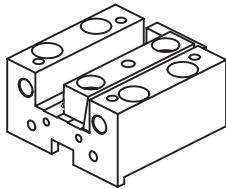
Qualified tool
25x25 mm



128-12059

Face and O.D. cutting holder
Poligonal C50

NEWS

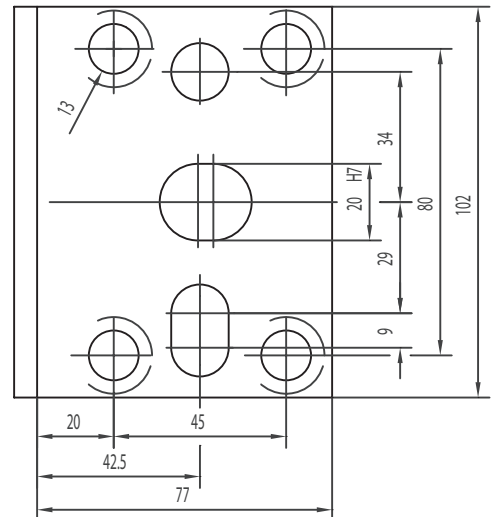


128-32001

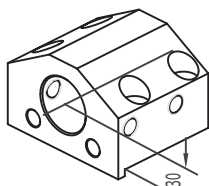
Face and I.D. cutting holder



CONNECTION



ACCESSORIES

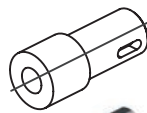


128-22001

Toolholder for boring bar



Ø40 mm



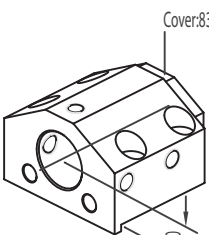
Drill socket

165-64010 <MT1>
165-64011 <MT2>
165-64012 <MT3>



Boring bar sleeve and throw-away drill socket

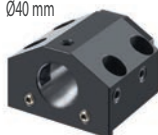
165-64135 (Ø8 mm)
165-64013 (Ø10 mm)
165-64014 (Ø12 mm)
165-64015 (Ø16 mm)
165-64016 (Ø20 mm)



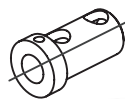
128-22005

Cover:832-003056

Combi toolholder for boring bar and insertdril with internal coolant

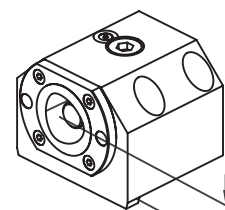


Ø40 mm



Boring bar sleeve and throw-away drill socket

165-64017 (Ø25 mm)
165-64018 (Ø32 mm)



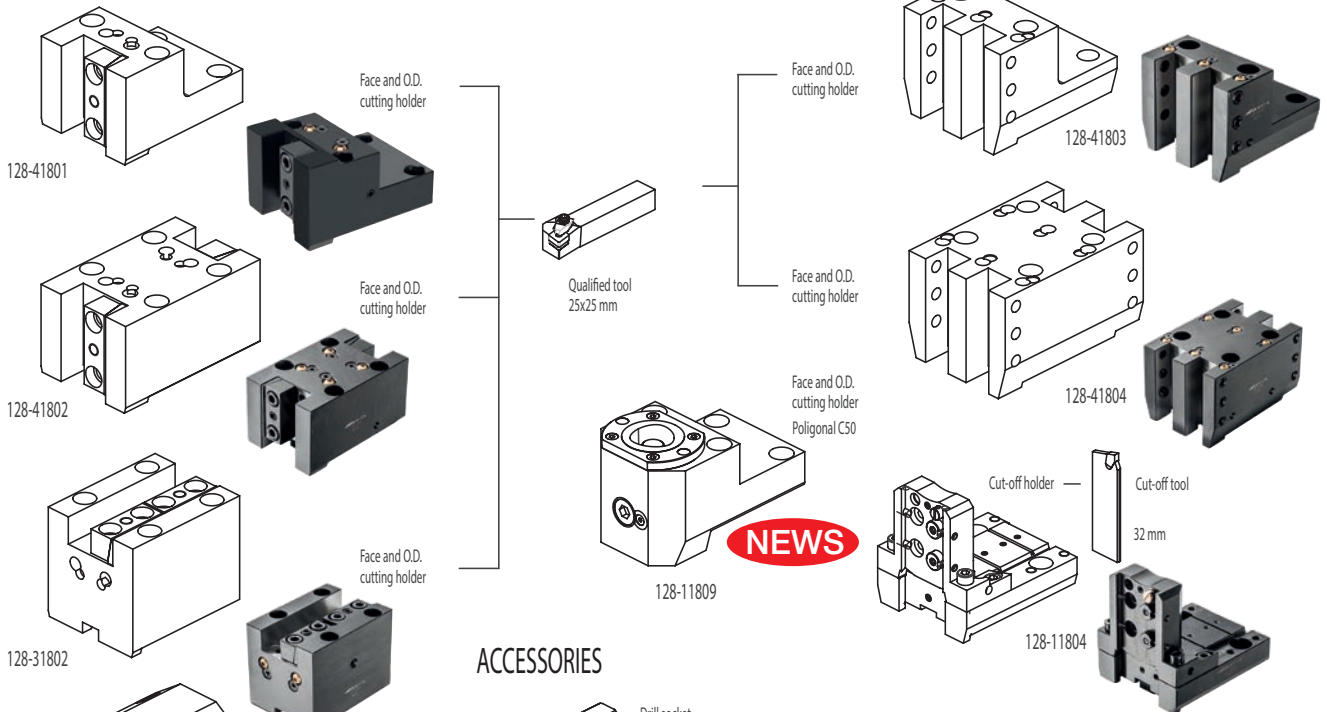
128-12057

Boring bar holder
Poligonal C50

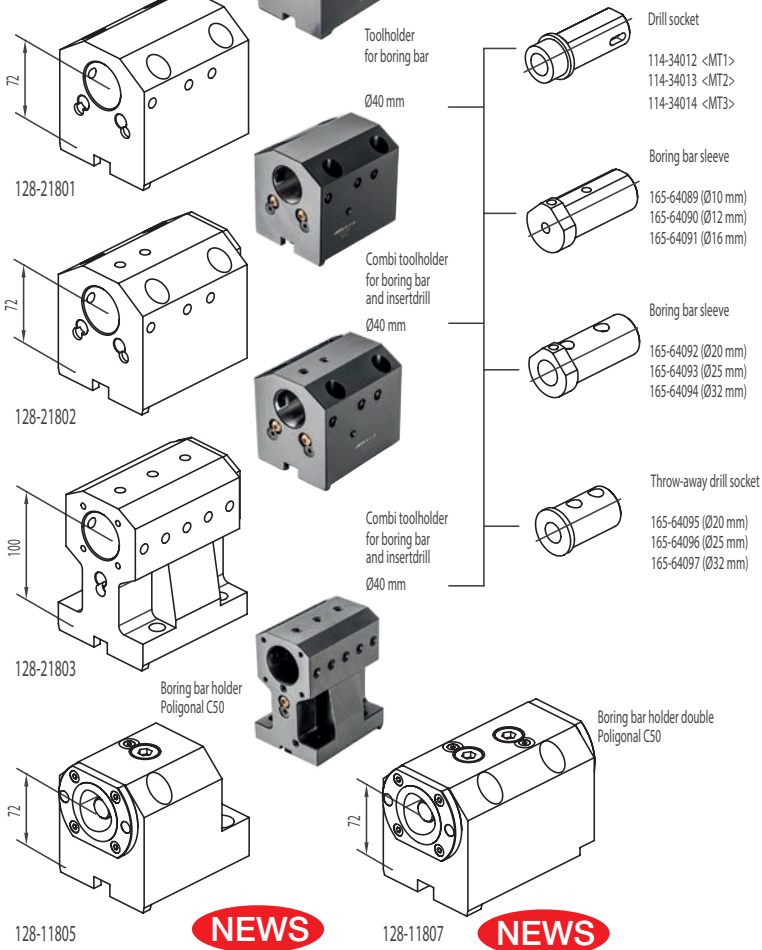
NEWS

HAAS (BMT65)

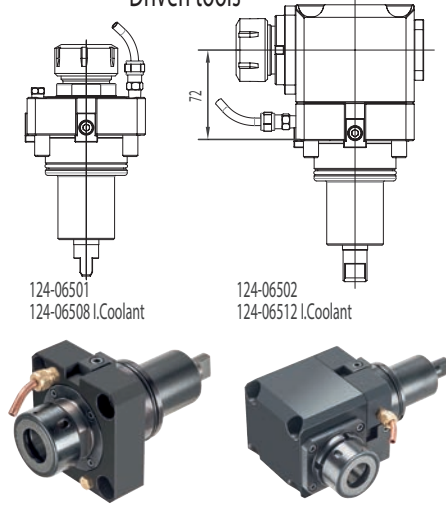
ST-20
ST-25
ST-30
ST-35
DS-30



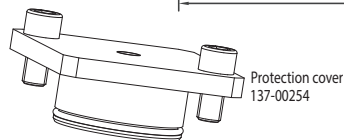
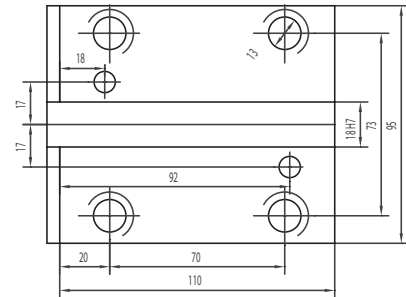
ACCESSORIES



Driven tools



CONNECTION



KINTEK®



HEAD OFFICE
KINTEK S.R.L. - MAPPANO - TORINO - ITALY



NEW PRODUCTION PLANT
A.M.T S.R.L. - CASELLE T.SE - TORINO - ITALY



MAIN PRODUCTION PLANT
KINTEK TOOLING KFT - BEKESCSABA - HUNGARY

KINTEK s.r.l.

Via Goretta 88/G - 10079 MAPPANO - (TO) - ITALY
Tel. +39 011 99 68 065 - Fax +39 011 99 65 662
e-mail: info@kintek.it
<http://www.kintek.it>