



STEADY REST

Samchully steady rests are designed and built to last.

With their robust arms and rollers, the steadyrest is able provide the support with minimal maintainence and setup.



STA

Self-Centering
Steady Rest

150 P



STRA

Wide-Opening
Self-Centering
Steady Rest

152 P

STA Self-Centering Steady Rest



Application / Benefits

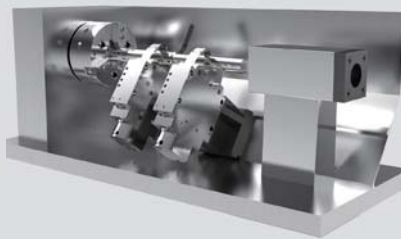
Enhances the accuracy when machining unstable, heavy or long work piece

Technical features

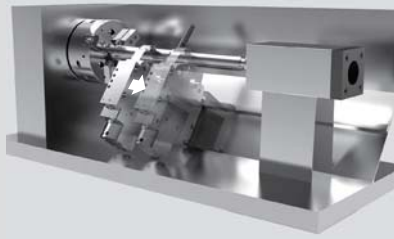
The arms and center rollers are interconnected and designed to self-adjust to various size workpieces.

The mechanical design improves durability by eliminating the need for springs.

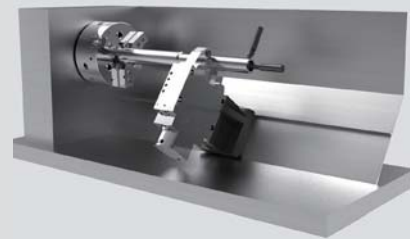
Fixed or Travelling Applications



Fixed Tandem Steady Rest



Travelling Steady Rest

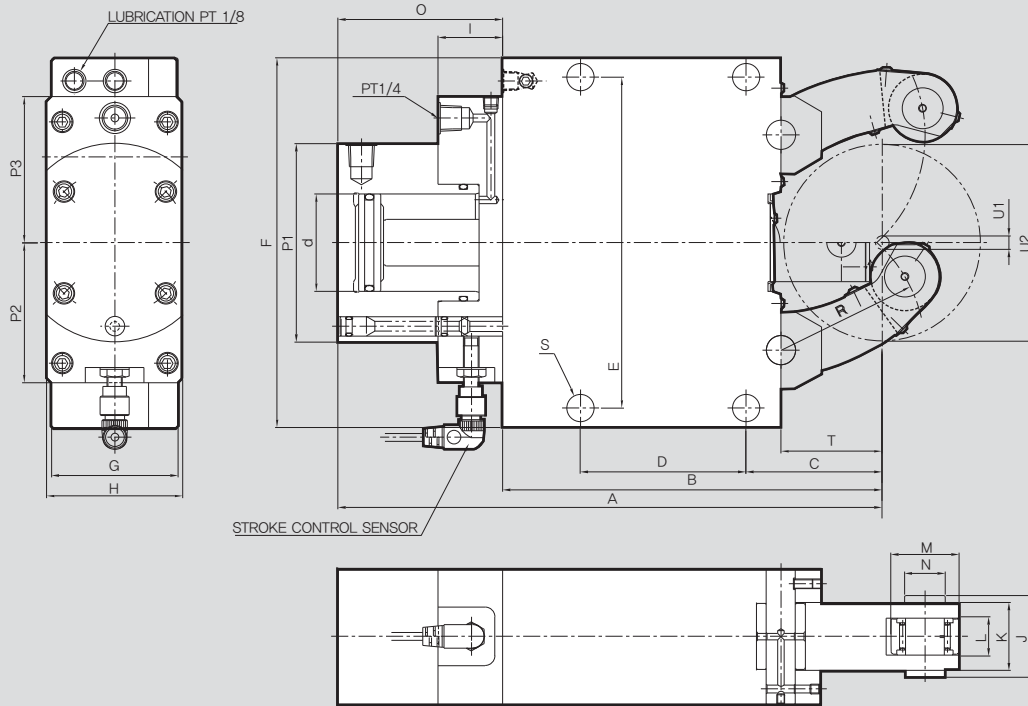


Fixed Steady Rest For End Machining

SPECIFICATIONS

	STA-1	STA-2	STA-3	STA-3.1	STA-3.2	STA-4	STA-5	STA-5.1	STA-6
Piston Area [cm ²]	7	19.6	50	50	50	78	78	78	132
Max. Clamping Force / Roller [kgf]	100	450	1000	1000	1000	1500	2000	2000	3000
Operation Pressure [bar]	Max.	50	70	60	60	60	80	80	70
	Min.	6	8	8	8	8	8	8	8
Centering Range [mm]	Max.	64	101	152	165	200	245	310	460
	Min.	4	8	12	20	50	30	45	125
Max. Roller Surface Speed [m/min]	800	800	725	725	725	715	700	700	700
Centering Accuracy [mm]	0.02	0.02	0.04	0.04	0.04	0.05	0.06	0.06	0.06
Repeatability Accuracy [mm]	0.005	0.005	0.007	0.007	0.007	0.007	0.01	0.01	0.01
Weight [kg]	6	14	39	40	43	92	152	155	420

STA



DIMENSIONS

	STA-1	STA-2	STA-3	STA-3.1	STA-3.2	STA-4	STA-5	STA-5.1	STA-6
A	207	279.5	431	440	455	608	697.5	717.5	944.5
B	137	195	312	320	335	448	510	530	709
C	51	70	115	123	138	146	178	198	215
D	64	85	135	135	135	240	270	270	330
E	118	170	262	262	262	365	400	400	640
F	132	190	290	290	290	400	440	440	680
G	55	70	85	85	85	110	145	145	145
H	70	70	100	100	100	144	144	144	158
I	33	33	37	37	37	37	37	37	37
J	24	42	52	52	52	67	83	83	83
K	20	35	45	45	45	60	75	75	75
L	12	19	25	25	25	25	29	29	29
M	19	35	47	47	47	52	62	62	80
N	6	21	25	25	25	32	36	36	42
O	70	84.5	120	120	120	160	187.5	187.5	235.5
P1	84	102	137	137	137	165	165	165	190
P2	66	72	90	90	90	102	102	102	115
P3	66	75	100	100	100	110	110	110	130
R	50.5	74	119	124	139	172	209	229	290
S	11	14	18	18	18	23	23	23	27
T	37	52	85	93	103	128	160	180	175
U1	4	8	11	20	50	35	45	85	125
U2	64	101	152	165	220	245	310	350	460

STRA Wide-Opening Self-Centering Steady Rest



Application / Benefits

Enhances the accuracy when machining unstable, heavy or long work piece

Technical features

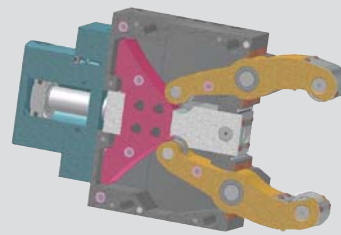
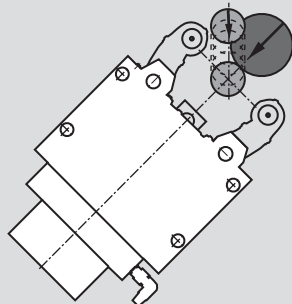
The arms and center rollers are interconnected and designed to self-adjust to various size workpieces

The mechanical design improves durability by eliminating the need for springs

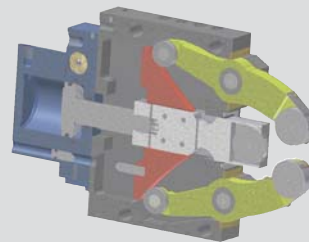
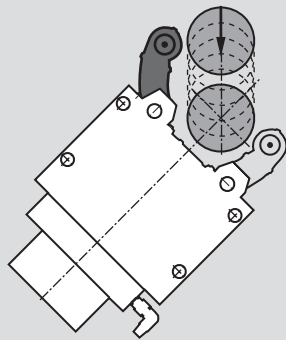
The top arm pivots extra wide to allow for easier drop down loading when working on mills or flatbed lathes

Fixed or Travelling Applications

STA
Conventional model



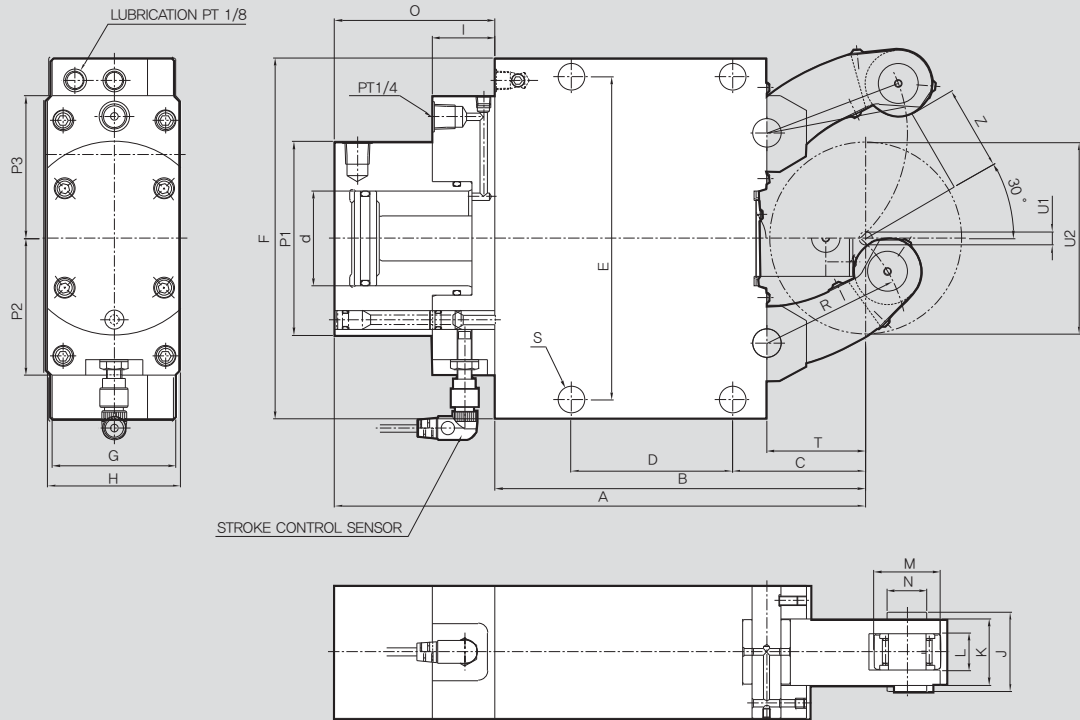
STRA
The wide opening arm of the STRA steady rest makes vertical loading and automation convenient



SPECIFICATIONS

	STRA-1	STRA-2	STRA-3	STRA-3.1	STRA-4	STRA-5	STRA-6	
Piston Area [cm ²]	7	19.6	50	50	78	78	132	
Max. Clamping Force / Roller [kgf]	100	450	1000	1000	1500	2000	3000	
Operation Pressure [bar]	Max.	50	70	60	60	60	80	70
	Min.	6	8	8	8	8	8	8
Centering Range [mm]	Max.	52	80	130	150	220	268	460
	Min.	4	8	12	22	30	50	160
Max. Roller Surface Speed [m/min]	800	800	725	725	715	700	700	
Centering Accuracy [mm]	0.02	0.02	0.04	0.04	0.05	0.06	0.06	
Repeatability Accuracy [mm]	0.005	0.005	0.007	0.007	0.007	0.01	0.01	
Weight [kg]	6	14	39	40	92	152	420	

STRA



DIMENSIONS

	STRA-1	STRA-2	STRA-3	STRA-3.1	STRA-4	STRA-5	STRA-6
A	207	279.5	431	440	608	688.5	944.5
B	137	195	312	320	448	510	709
C	51	70	115	123	146	178	215
D	64	85	135	135	240	270	330
E	118	170	262	262	365	400	640
F	132	190	290	290	400	440	680
G	55	70	85	85	110	145	145
H	70	70	100	100	144	144	158
I	33	33	37	37	37	37	37
J	24	42	52	52	67	83	83
K	20	35	45	45	60	75	75
L	12	19	25	25	25	29	29
M	19	35	47	47	52	62	80
N	6	21	25	25	32	36	42
O	70	84.5	120	120	160	187.5	235.5
P1	84	102	137	137	165	165	190
P2	66	72	90	90	102	102	115
P3	66	75	100	100	110	110	130
R	50.5	74	119	124	172	209	290
S	11	14	18	18	23	23	27
T	37	52	85	93	128	160	175
Z	26.5	41	66	76	111	135	230
U1	4	8	12	22	30	50	160
U2	52	80	130	150	220	268	460