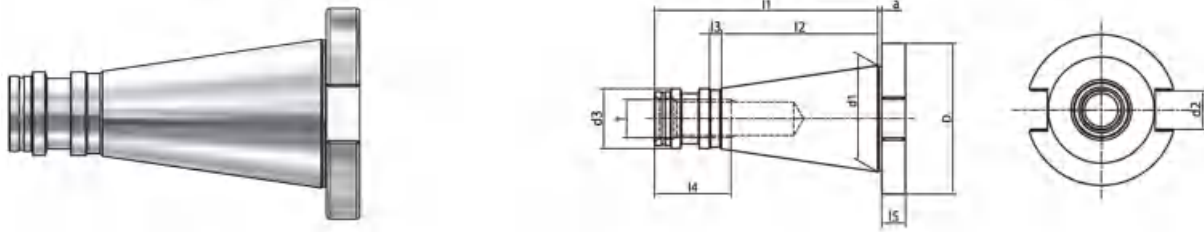


NT

TOOL HOLDERS

NT Taper Standard

NT 锥柄标准



Size	D	d1	d2	d3	a	l1	l2	l3	l4	l5	T
NT30	50	31.75	16.1	17.04	1.6	68.4	48.4	3	24	8	M12
NT40	63	44.45	16.1	24.92	1.6	93.4	65.4	5	32	10	M16
NT50	97.5	69.85	25.7	39.19	3.2	126.8	101.8	8	47	12	M24

Taper standard: DIN 2080

Material: Alloyed case hardened steel

Surface Treatment: Blackening and Bright

Taper tolerance: <AT3

Hardness: HRC 58-62

Carbon depth: 0.8±0.2mm

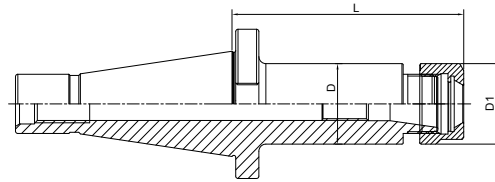
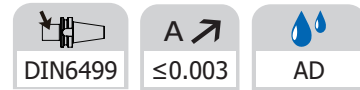
Surface Roughness: Ra<0.005mm

NT TOOLING SYSTEM

NT 工具系统

ER Collet Chuck.....	E.04
ER弹簧夹头刀柄	E.04
Power Milling Chuck.....	E.06
强力铣刀柄	E.06
OZ Collet Chuck.....	E.07
OZ夹头刀柄	E.07
Face Mill Holder	E.08
面铣刀柄	E.08
Combi Shell Mill Holder.....	E.09
混合插入式铣刀柄	E.09
End Mill Holder.....	E.10
侧固刀柄	E.10
Morse Taper Adapter.....	E.11
带扁尾莫氏刀柄	E.11
Morse Taper Adapter	E.12
带螺纹孔莫氏刀柄	E.12
Tool Holder Adatper Sleeve	E.13
转换刀柄.....	E.13
Drill Chuck Adapter.....	E.14
钻接杆	E.14
APU Drill Chuck Holder	E.15
APU钻夹头刀柄.....	E.15
Quick Change Tapping Chuck	E.16
弹性快换攻丝刀柄	E.15

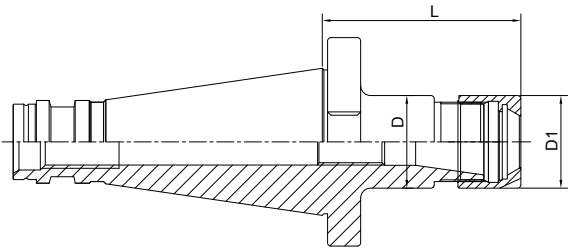


ER Collet Chuck
ER 弹簧夹头刀柄


Size	D	D1	L	Capacity
NT30-ER16A-50	28	28	50	1-10
NT30-ER20A-50	34	34	50	1-13
NT30-ER25-50	42	42	50	2-16
NT30-ER32-50	40	50	50	2-20
NT30-ER40-80	50	63	80	4-26
NT40-ER16A-50 OTT	28	28	50	1-10
NT40-ER25-50 OTT	42	42	50	1-13
NT40-ER32-60 OTT	50	50	60	3-20
NT40-ER40-80 OTT	50	63	80	4-26
NT40-ER16A-100 OTT	28	28	100	1-10
NT40-ER20A-100 OTT	34	34	100	1-13
NT40-ER25-100 OTT	42	42	100	2-16
NT40-ER32-100 OTT	50	50	100	3-20
NT50-ER32-70 OTT	50	50	70	1-20
NT50-ER40-70 OTT	63	63	70	2-26
NT50-ER50-90 OTT	70	78	90	6-34
NT50-ER16A-100 OTT	28	28	100	1-10
NT50-ER20A-100 OTT	34	34	100	1-13
NT50-ER32-100 OTT	50	50	100	3-20
NT50-ER40-100 OTT	63	63	100	4-26

NT

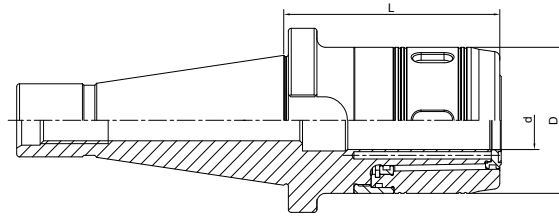
ER Collet Chuck with Mini Nut
ER 弹簧夹头刀柄



Size	D	D1	L	Capacity
NT30-ER16M-70	22	22	70	1-10
NT30-ER20M-70	28	28	70	1-13
NT30-ER25M-70	35	35	70	2-16
NT40-ER16M-60 OTT	22	22	60	1-10
NT40-ER20M-60 OTT	28	28	60	1-13
NT40-ER25M-60 OTT	35	35	60	2-16

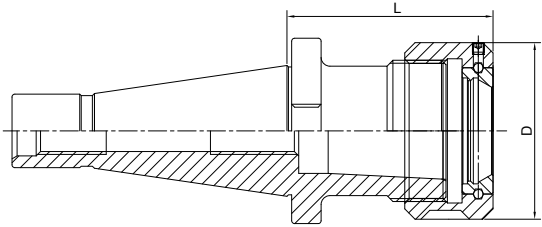
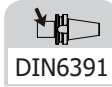
NT

Power Milling Chuck 强力铣刀柄



Size	d	D	L	Capacity	M
NT40-HC25-90	25	59	90	3-20; 25	M16
NT40-HC32-90	32	70	90	3-25; 32	M16
NT40-HC32-105	32	70	105	3-25; 32	M16
NT50-HC25-85	25	59	85	3-20; 25	M24
NT50-HC32-90	32	70	90	3-25; 32	M24
NT50-HC42-95	42	99	95	3-32; 42	M24
NT50-HC25-150	25	59	150	3-20; 25	M24
NT50-HC32-150	32	70	150	3-25; 32	M24
NT50-HC42-150	42	99	150	3-32; 42	M24

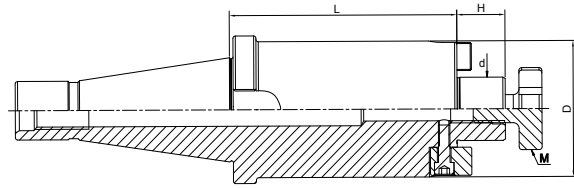
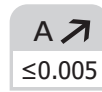
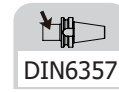
OZ Collet Chuck
OZ 夹头刀柄



Size	D	L	Capacity
NT30-OZ16-50	43	50	2-16
NT30-OZ25-70	60	70	3-25
NT40-OZ16-70	43	70	2-16
NT40-OZ25-70	60	70	3-25
NT40-OZ32-80	72	80	6-32
NT50-OZ25-70	60	70	3-25
NT50-OZ32-80	72	80	6-32

NT

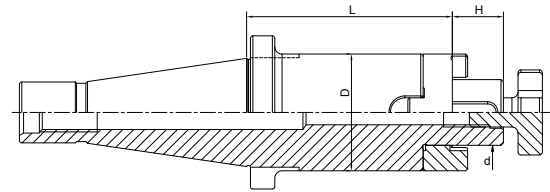
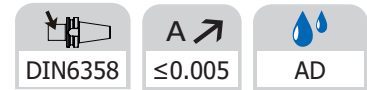


Face Mill Holder
面铣刀柄


Size	d	D	L	H	M
NT30-FMB16-30	16	38	30	17	M8
NT30-FMB22-30	22	48	30	19	M10
NT30-FMB27-45	27	58	45	21	M12
NT30-FMB32-50	32	78	50	24	M16
NT40-FMB16-30	16	38	30	17	M8
NT40-FMB22-30	22	48	30	19	M10
NT40-FMB27-30	27	58	30	21	M12
NT40-FMB32-30	32	78	30	24	M16
NT40-FMB40-30	40	88	30	27	M16
NT50-FMB16-30	16	38	30	17	M8
NT50-FMB22-35	22	48	35	19	M10
NT50-FMB27-35	27	58	35	21	M12
NT50-FMB32-40	32	78	40	24	M16
NT50-FMB40-40	40	88	40	27	M16

NT

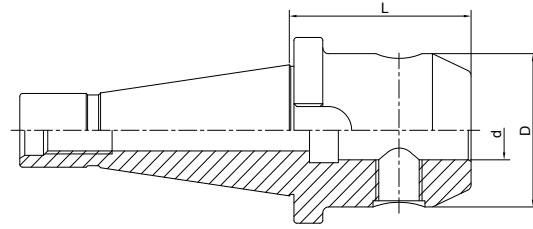
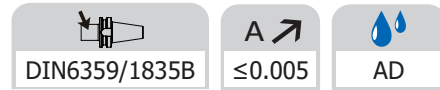

Combi Shell Mill Holder
混合插入式铣刀柄



Size	d	D	L	L1
NT30-SEMC16-35	16	32	35	17
NT30-SEMC22-35	22	40	35	19
NT30-SEMC27-35	27	48	35	21
NT30-SEMC32-50	32	58	50	24
NT40-SEMC16-52	16	32	52	17
NT40-SEMC22-52	22	40	52	19
NT40-SEMC27-52	27	48	52	21
NT40-SEMC32-52	32	58	52	24
NT40-SEMC40-52	40	70	52	27
NT50-SEMC16-55	16	32	55	17
NT50-SEMC22-55	22	40	55	19
NT50-SEMC27-55	27	48	55	21
NT50-SEMC32-55	32	58	55	24
NT50-SEMC40-55	40	70	55	27

NT

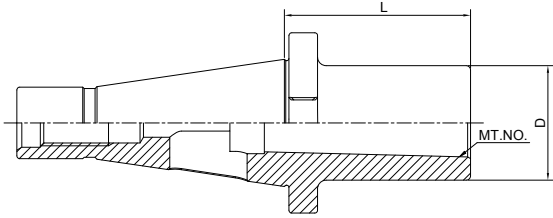
End Mill Holder Weldon 侧固刀柄



Size	d	D	L
NT30-SLA6-40	6	25	40
NT30-SLA8-40	8	28	40
NT30-SLA10-40	10	35	40
NT30-SLA12-40	12	42	40
NT30-SLA16-50	16	48	50
NT30-SLA18-50	18	50	50
NT30-SLA20-63	20	52	63
NT40-SLA6-50	6	25	50
NT40-SLA8-50	8	28	50
NT40-SLA10-50	10	35	50
NT40-SLA12-50	12	42	50
NT40-SLA14-50	14	44	50
NT40-SLA16-63	16	48	63
NT40-SLA18-63	18	50	63
NT40-SLA20-63	20	52	63
NT40-SLA25-80	25	65	80
NT40-SLA32-80	32	72	80
NT40-SLA40-90	42	80	90
NT50-SLA6-63	6	25	63
NT50-SLA8-63	8	28	63
NT50-SLA10-63	10	35	63
NT50-SLA12-63	12	42	63
NT50-SLA14-63	14	44	63
NT50-SLA16-63	16	48	63
NT50-SLA18-63	18	50	63
NT50-SLA20-63	20	52	63
NT50-SLA25-80	25	65	80
NT50-SLA32-80	32	72	80
NT50-SLA40-90	40	80	90



Morse Taper Adapter with Tang
带扁尾莫氏刀柄

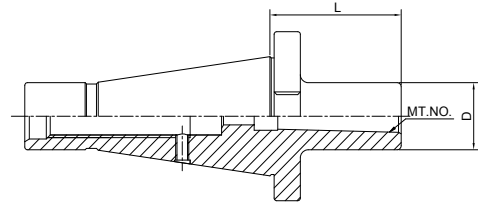
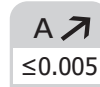
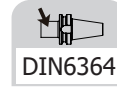


Size	MT.No.	L	D
NT30-MTA1-50	1	50	25
NT30-MTA2-50	2	50	32
NT30-MTA3-75	3	75	40
NT40-MTA1-50	1	50	25
NT40-MTA2-50	2	50	32
NT40-MTA3-65	3	65	40
NT40-MTA4-95	4	95	48
NT50-MTA1-45	2	45	25
NT50-MTA2-60	2	60	32
NT50-MTA3-65	3	65	40
NT50-MTA4-70	4	70	48
NT50-MTA5-105	5	105	63

NT



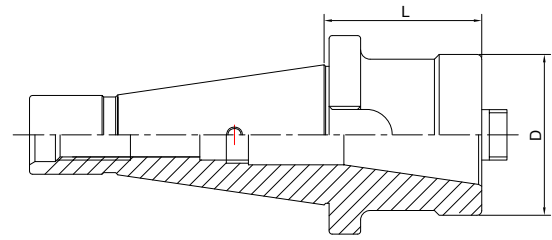
Morse Taper Adapter with Drawbar 带螺纹孔莫氏刀柄



Size	MT.No.	L	D
NT30-MTB1-45	1	45	25
NT30-MTB2-60	2	60	32
NT30-MTB3-70	3	70	40
NT40-MTB1-50	1	50	25
NT40-MTB2-50	2	50	32
NT40-MTB3-65	3	65	40
NT40-MTB4-95	4	95	48
NT50-MTB1-60	2	60	25
NT50-MTB2-60	2	60	32
NT50-MTB3-65	3	65	40
NT50-MTB4-65	4	65	48
NT50-MTB5-120	5	120	63



Tool Holder Adatper Sleeve
转换刀柄

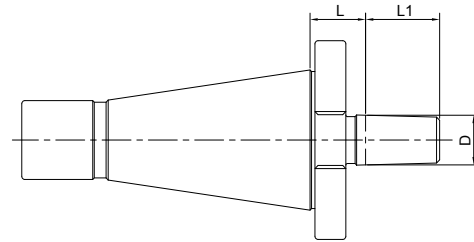
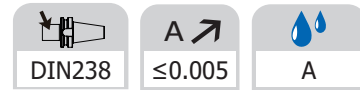


Size	D	L
NT40-NT30-50	51	50
NT40-NT40-100	63	100
NT50-NT40-50	70	50
NT50-NT50-125	97	125

NT



Drill Chuck Adapter 钻接杆



Size	D	L	L1
NT30-B12	B12	15	18.5
NT30-B16	B16	17	24
NT40-B12	B12	18	18.5
NT40-B16	B16	18	24
NT40-B18	B18	18	32
NT50-B16	B16	20	24
NT50-B18	B18	20	32



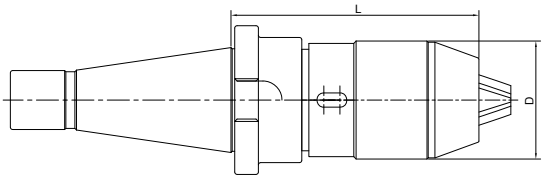
APU Drill Chuck Holder
APU 钻夹头刀柄

A ↗

≤0.08

💧

A

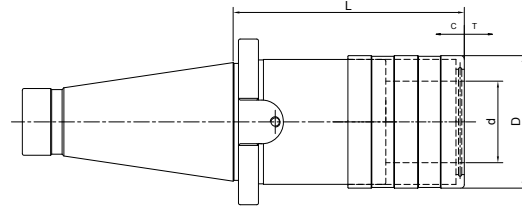


Size	D	L		Capacity
NT30-APU08-80	38	80	90	1-8
NT30-APU13-100	48	100	110	1-13
NT40-APU08-85	38	85	95	1-8
NT40-APU13-110	48	110	120	1-13
NT40-APU16-130	53	130	141	3-16
NT50-APU08-95	38	90	105	1-8
NT50-APU13-120	48	120	130	1-13
NT50-APU16-130	53	130	141	3-16

NT

Quick Change Tapping Chuck with Length Compensation

弹性快换攻丝刀柄



Size	Collet Size	d	D	L	T	C
NT30-TC312-55	1	19	36	55	7.5	7.5
NT30-TC820-86	2	31	53	86	12.5	12.5
NT40-TC312-55	1	19	36	55	7.5	7.5
NT40-TC820-86	2	31	53	86	12.5	12.5
NT40-TC1433-132	3	48	78	132	22	22
NT50-TC312-62	1	19	36	62	7.5	7.5
NT50-TC820-90	2	31	53	90	12.5	12.5
NT50-TC1433-117	3	48	78	117	22	22