

TOOL HOLDERS

HYDRAULIC


HYDRAULIC TOOLING SYSTEM

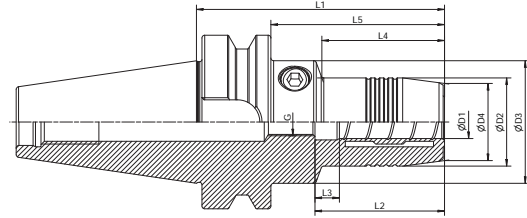
HYDRAULIC 工具系统

BT Hydraulic Chuck, Standard004
BT 液压刀柄, 标准型004
SK Hydraulic Chuck, Standard006
SK 液压刀柄, 标准型006
HSK-A Hydraulic Chuck, Standard007
HSK-A 液压刀柄, 标准型007
HSK-C Hydraulic Chuck, Standard009
HSK-C 液压刀柄, 标准型009
HSK-E Hydraulic Chuck, Standard.....	.010
HSK-E 液压刀柄, 标准型010
HSK-F Hydraulic Chuck, Standard011
HSK-F 液压刀柄, 标准型011
Hydraulic Collet, Standard.....	.012
液压筒夹, 标准型012
Hydraulic Chuck, Sealed.....	.013
液压刀柄, 止水型013



Hydraulic Chuck, Standard
 液压刀柄, 标准型

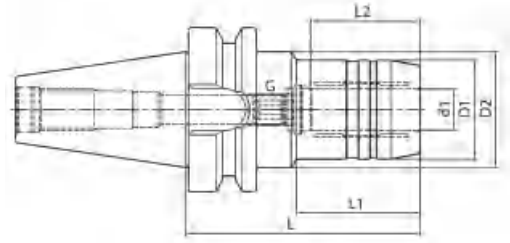
A ↗ ≤0.003	G Value G2.5	 AD AD/B
---------------	-----------------	--



Size	D1	D2	D3	D4	L1	L2	L3	L4	L5	G
BT30-HY06-70	6	26	45	22	70	38	10	30	48	M5*0.8
BT30-HY08-70	8	28	45	24	70	38	10	30	48	M6*1
BT30-HY10-75	10	30	45	26	75	42	10	36	53	M8*1
BT30-HY12-85	12	32	45	28	85	47	10	46	63	M10*1
BT30-HY14-85	14	34	45	30	85	47	10	46	63	M10*1
BT30-HY16-90	16	38	45	34	90	50	10	52	68	M10*1
BT30-HY18-90	18	40	45	36	90	50	10	52	68	M10*1
BT30-HY20-90	20	42	45	38	90	52	10	53	68	M10*1
BT40-HY06-90	6	26	44.5	22	90	38	10	43	63	M5*0.8
BT40-HY08-90	8	28	44.5	24	90	38	10	44.5	63	M6*1
BT40-HY10-90	10	30	44.5	26	90	42	10	44.5	63	M8*1
BT40-HY12-90	12	32	44.5	28	90	47	10	44.5	63	M10*1
BT40-HY14-90	14	34	44.5	30	90	47	10	44.5	63	M10*1
BT40-HY16-90	16	38	50	34	90	50	10	44.5	63	M12*1
BT40-HY18-90	18	40	50	36	90	50	10	45.5	63	M12*1
BT40-HY20-90	20	42	50	38	90	52	10	47.5	63	M16*1
BT40-HY25-100	25	57	62	53	100	58	10	55	73	M16*1
BT40-HY32-105	32	62	~	58	105	62	10	~	78	M16*1

Hydraulic Chuck, Standard
液压刀柄, 标准型

A ↗ ≤0.003	G Value G2.5	AD AD/B
---------------	-----------------	---------

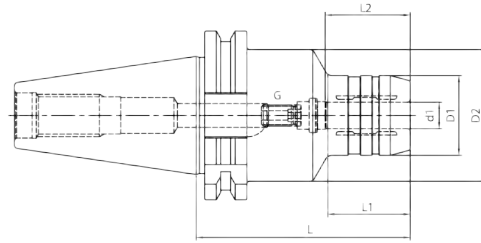


Size	d	D	D1	L	L1	L2	Screw
BT50-HY06-90	6	26	44.5	90	34	27	M5×0.8
BT50-HY08-90	8	28	44.5	90	34	27	M6×1.0
BT50-HY10-90	10	30	44.5	90	34	32	M8×1.0
BT50-HY12-90	12	32	44.5	90	34	37	M10×1.0
BT50-HY14-90	14	34	44.5	90	34	37	M10×1.0
BT50-HY16-90	16	38	44.5	90	34	42	M12×1.0
BT50-HY18-90	18	40	44.5	90	34	42	M12×1.0
BT50-HY20-90	20	42	44.5	90	34	42	M16×1.0
BT50-HY25-105	25	57	63	105	52	48	M16×1.0
BT50-HY32-115	32	64	75	115	62	55	M16×1.0
BT50-HY06-120	6	26	44.5	120	34	27	M5×0.8
BT50-HY08-120	8	28	44.5	120	34	27	M6×1.0
BT50-HY10-120	10	30	44.5	120	34	32	M8×1.0
BT50-HY12-120	12	32	44.5	120	34	37	M10×1.0
BT50-HY14-120	14	34	44.5	120	34	37	M10×1.0
BT50-HY16-120	16	38	44.5	120	34	42	M12×1.0
BT50-HY18-120	18	40	44.5	120	34	42	M12×1.0
BT50-HY20-120	20	42	44.5	120	34	42	M16×1.0
BT50-HY06-150	6	26	44.5	150	34	27	M5×0.8
BT50-HY08-150	8	28	44.5	150	34	27	M6×1.0
BT50-HY10-150	10	30	44.5	150	34	32	M8×1.0
BT50-HY12-150	12	32	44.5	150	34	37	M10×1.0
BT50-HY14-150	14	34	44.5	150	34	37	M10×1.0
BT50-HY16-150	16	38	44.5	150	34	42	M12×1.0
BT50-HY18-150	18	40	44.5	150	34	42	M12×1.0
BT50-HY20-150	20	42	44.5	150	34	42	M16×1.0
BT50-HY25-150	25	57	63	150	97	48	M16×1.0
BT50-HY32-150	32	64	75	150	97	55	M16×1.0

HYDRO

Hydraulic Chuck, Standard
 液压刀柄, 标准型

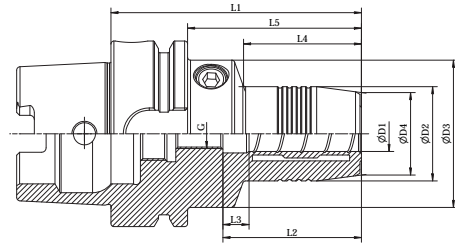
A ↗ ≤0.003	G Value G2.5	AD AD/B
---------------	-----------------	---------



Size	d	D	D1	L	L1	L2	Screw
SK30-HY06-70	6	26	45	70	20	27	M5x0.8
SK30-HY08-70	8	28	45	70	20	27	M6x1.0
SK30-HY10-75	10	30	45	75	21	32	M8x1.0
SK30-HY12-85	12	32	45	85	40	37	M10x1.0
SK30-HY14-85	14	34	45	85	22	37	M10x1.0
SK30-HY16-90	16	38	45	90	50	42	M6x1.0
SK30-HY18-90	18	40	45	90	50	42	M10x1.0
SK30-HY20-90	20	42	45	90	50	42	M6x1.0
SK40-HY06-80.5	6	26	49.5	80.5	30	27	M5x0.8
SK40-HY08-80.5	8	28	49.5	80.5	30	27	M6x1.0
SK40-HY10-80.5	10	30	49.5	80.5	31	32	M8x1.0
SK40-HY12-80.5	12	32	49.5	80.5	31.5	37	M10x1.0
SK40-HY16-80.5	16	38	49.5	80.5	33	42	M12x1.0
SK40-HY20-80.5	20	42	49.5	80.5	34	42	M16x1.0
SK40-HY25-80.5	25	55	66	80.5	22	48	M16x1.0
SK40-HY32-80.5	32	63	80	80.5	25.5	55	M16x1.0
SK40-HY06-110	6	26	49.5	110	29.5	27	M5x0.8
SK40-HY08-110	8	28	49.5	110	30	27	M6x1.0
SK40-HY10-110	10	30	49.5	110	31	32	M8x1.0
SK40-HY12-110	12	32	49.5	110	31.5	37	M10x1.0
SK40-HY16-110	16	38	49.5	110	33	42	M12x1.0
SK40-HY20-110	20	42	49.5	110	34	42	M16x1.0
SK50-HY06-80.5	6	26	49.5	80.5	30	27	M5x0.8
SK50-HY08-80.5	8	28	49.5	80.5	30	27	M6x1.0
SK50-HY10-80.5	10	30	49.5	80.5	32	32	M8x1.0
SK50-HY12-80.5	12	32	49.5	80.5	35	37	M10x1.0
SK50-HY16-80.5	16	38	49.5	80.5	40	42	M12x1.0
SK50-HY20-80.5	20	42	49.5	80.5	40	42	M16x1.0

Hydraulic Chuck, Standard
液压刀柄, 标准型

A ↗ ≤0.003	G Value G2.5	AD AD/B
----------------------	------------------------	---------




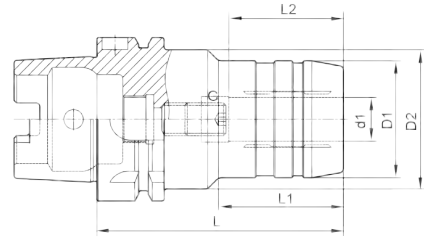
Size	D1	D2	D3	D4	L1	L2	L3	L4	L5	G
HSK63A-HY06-70	6	26	50	22	70	38	10	24	44	M5*0.8
HSK63A-HY08-70	8	28	50	24	70	38	10	25	44	M6*1
HSK63A-HY10-80	10	30	50	26	80	42	10	35	54	M8*1
HSK63A-HY12-85	12	32	50	28	85	47	10	40	59	M10*1
HSK63A-HY14-85	14	34	50	30	85	47	10	40	59	M10*1
HSK63A-HY16-90	16	38	50	34	90	50	10	46	64	M10*1
HSK63A-HY18-90	18	40	50	36	90	50	10	47	64	M10*1
HSK63A-HY20-90	20	42	50	38	90	52	10	48	64	M10*1
HSK63A-HY25-120	25	57	62	53	120	58	10	59	94	M16*1
HSK63A-HY32-125	32	62	~	58	125	62	10	~	99	M16*1
HSK63A-HY06-150	6	26	50	22	150	38	10	103	124	M5*0.8
HSK63A-HY08-150	8	28	50	24	150	38	10	104	124	M6*1
HSK63A-HY10-150	10	30	50	26	150	42	10	104	124	M8*1
HSK63A-HY12-150	12	32	50	28	150	47	10	105	124	M10*1
HSK63A-HY14-150	14	34	50	30	150	47	10	105	124	M10*1
HSK63A-HY16-150	16	38	50	34	150	50	10	106	124	M12*1
HSK63A-HY18-150	18	40	50	36	150	50	10	107	124	M12*1
HSK63A-HY20-150	20	42	50	38	150	52	10	108	124	M16*1
HSK100A-HY06-75	6	26	50	22	75	38	10	26	46	M5*0.8
HSK100A-HY08-75	8	28	50	24	75	38	10	26	46	M6*1
HSK100A-HY10-90	10	30	50	26	90	42	10	42	61	M8*1
HSK100A-HY12-95	12	32	50	28	95	47	10	47	66	M10*1
HSK100A-HY14-95	14	34	50	30	95	47	10	47	66	M10*1
HSK100A-HY16-100	16	38	50	34	100	50	10	53	71	M12*1
HSK100A-HY18-100	18	40	50	36	100	50	10	53	71	M12*1
HSK100A-HY20-105	20	42	50	38	105	52	10	59	76	M16*1
HSK100A-HY25-110	25	57	63	53	110	58	10	62	81	M16*1
HSK100A-HY32-110	32	62	70	58	110	62	10	62	81	M16*1

HYDRO

Hydraulic Chuck, Standard
 液压刀柄, 标准型



A ↗ ≤0.003	G Value G2.5	 AD AD/B
---------------	-----------------	--

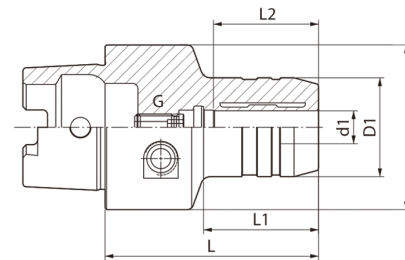


Size	d	D	D1	L	L1	L2	Screw
HSK63A-HY6-70	6	26	50	70	24	27	M5×0.8
HSK63A-HY8-70	8	28	50	70	25	27	M6×1.0
HSK63A-HY10-80	10	30	50	80	35	32	M8×1.0
HSK63A-HY12-85	12	32	50	85	40	37	M10×1.0
HSK63A-HY14-85	14	34	50	85	40	37	M10×1.0
HSK63A-HY16-90	16	38	50	90	46	42	M12×1.0
HSK63A-HY18-90	18	40	50	90	47	42	M12×1.0
HSK63A-HY20-90	20	42	50	90	48	42	M16×1.0
HSK63A-HY25-120	25	57	63	120	59	48	M16×1.0
HSK63A-HY32-125	32	64	75	125	63	55	M16×1.0
HSK80A-HY12-85	12	32	50	85	40	37	M10x1.0
HSK80A-HY20-95	20	42	50	95	52	42	M16x1.0
HSK80A-HY32-125	32	64	75	125	63	55	M16x1.0
HSK100A-HY6-75	6	26	50	75	26	27	M5×0.8
HSK100A-HY8-75	8	28	50	75	26	27	M6×1.0
HSK100A-HY10-90	10	30	50	90	42	32	M8×1.0
HSK100A-HY12-95	12	32	50	95	47	37	M10×1.0
HSK100A-HY14-95	14	34	50	95	47	37	M10×1.0
HSK100A-HY16-100	16	38	50	100	53	42	M12×1.0
HSK100A-HY18-100	18	40	50	100	53	42	M12×1.0
HSK100A-HY20-105	20	42	50	105	59	42	M16×1.0
HSK100A-HY25-110	25	57	63	110	62	48	M16×1.0
HSK100A-HY32-110	32	64	75	110	62	55	M16×1.0

Hydraulic Chuck, Standard
液压刀柄, 标准型



A ↗ ≤0.003	G Value G2.5	AD AD/B
----------------------	------------------------	---------




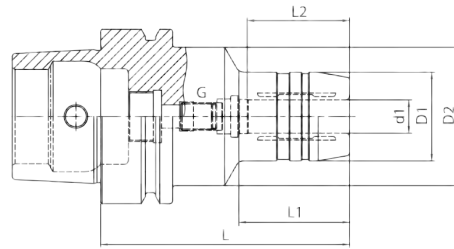
Size	d1	D1	D2	L	L1	L2	G
HSK32C-HY6-65	6	26	32	65	30	27	M5x0.8
HSK32C-HY8-70	8	28	32	70	34	27	M6x1.0
HSK32C-HY10-75	10	30	32	75	39	32	M6x1.0
HSK32C-HY12-80	12	32	32	80	-	37	M6x1.0
HSK40C-HY6-60	6	26	40	60	36	27	M5x0.8
HSK40C-HY8-60	8	28	40	60	36	27	M6x1.0
HSK40C-HY10-65	10	30	40	65	41	32	M6x1.0
HSK40C-HY12-70	12	32	40	70	47	37	M6x1.0
HSK50C-HY6-60	6	26	50	60	30	27	M5x0.8
HSK50C-HY8-60	8	28	50	60	30	27	M6x1.0
HSK50C-HY10-65	10	30	50	65	35	32	M8x1.0
HSK50C-HY12-75	12	32	50	75	44	37	M10x1.0
HSK50C-HY14-75	14	34	50	75	46	37	M10x1.0
HSK50C-HY16-80	16	38	50	80	51	42	M12x1.0
HSK50C-HY18-80	18	40	50	80	51	42	M12x1.0
HSK50C-HY20-80	20	42	50	80	48	42	M16x1.0
HSK63C-HY6-60	6	26	63	60	25	27	M5x0.8
HSK63C-HY8-60	8	28	63	60	25	27	M6x1.0
HSK63C-HY10-65	10	30	63	65	31	32	M8x1.0
HSK63C-HY12-75	12	32	63	75	41	37	M10x1.0
HSK63C-HY14-75	14	34	63	75	40	37	M10x1.0
HSK63C-HY16-80	16	38	63	80	48	42	M12x1.0
HSK63C-HY18-80	18	40	63	80	47	42	M12x1.0
HSK63C-HY20-80	20	42	63	80	49	42	M16x1.0
HSK63C-HY25-95	25	57	63	95	63	48	M16x1.0
HSK63C-HY32-100	32	63	63	100	-	55	M16x1.0

Hydraulic Chuck, Standard

液压刀柄, 标准型



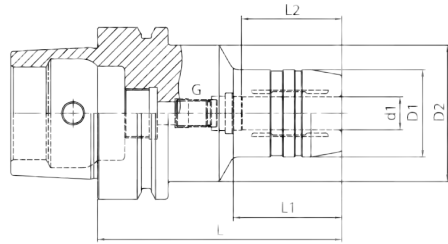
A ↗ ≤0.003	G Value G2.5	 AD AD/B
---------------	-----------------	--



Size	d1	D1	D2	L	L1	L2	G
HSK40E-HY6-70	6	26	34	70	36	27	M5x0.8
HSK40E-HY8-70	8	28	34	70	36	27	M6x1.0
HSK40E-HY10-75	10	30	34	75	42	32	M6x1.0
HSK40E-HY12-80	12	32	34	80	48	37	M6x1.0
HSK50E-HY6-70	6	26	40	70	28	27	M5x0.8
HSK50E-HY8-70	8	28	40	70	28	27	M6x1.0
HSK50E-HY10-75	10	30	40	75	34	32	M8x1.0
HSK50E-HY12-85	12	32	40	85	44	37	M10x1.0
HSK50E-HY16-90	16	38	53	90	30	42	M12x1.0
HSK50E-HY20-90	20	42	60	90	29	42	M16x1.0

Hydraulic Chuck, Standard
 液压刀柄, 标准型

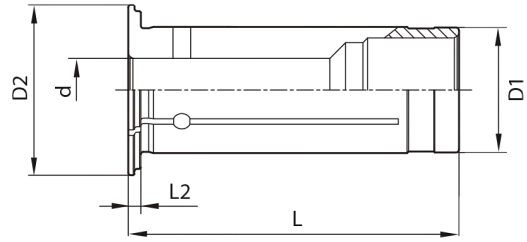
A ↗ ≤0.003	G Value G2.5	AD AD/B
---------------	-----------------	---------



Size	d1	D1	D2	L	L1	L2	G
HSK63F-HY20-85	20	42	50	85	46	42	M12x1.0

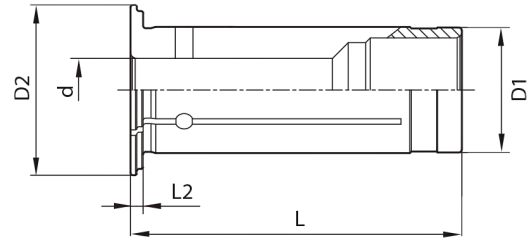
Hydraulic Collet, Standard

液压筒夹, 标准型



Size	d	D1	D2	L	L2
HY12-3	3	12	19	47	2
HY12-4	4	12	19	47	2
HY12-5	5	12	19	47	2
HY12-6	6	12	19	47	2
HY12-7	7	12	19	47	2
HY12-8	8	12	19	47	2
HY20-3	3	20	27	52.5	2
HY20-4	4	20	27	52.5	2
HY20-5	5	20	27	52.5	2
HY20-6	6	20	27	52.5	2
HY20-7	7	20	27	52.5	2
HY20-8	8	20	27	52.5	2
HY20-9	9	20	27	52.5	2
HY20-10	10	20	27	52.5	2
HY20-11	11	20	27	52.5	2
HY20-12	12	20	27	52.5	2
HY20-13	13	20	27	52.5	2
HY20-14	14	20	27	52.5	2
HY20-15	15	20	27	52.5	2
HY20-16	16	20	27	52.5	2
HY32-6	6	32	39	63.5	3
HY32-8	8	32	39	63.5	3
HY32-10	10	32	39	63.5	3
HY32-12	12	32	39	63.5	3
HY32-14	14	32	39	63.5	3
HY32-16	16	32	39	63.5	3
HY32-18	18	32	39	63.5	3
HY32-20	20	32	39	63.5	3
HY32-25	25	32	39	63.5	3

Hydraulic Collet, Sealed
液压筒夹, 止水型



Size	d	D1	D2	L	L2
HY12-3	3	12	19	47	2
HY12-4	4	12	19	47	2
HY12-5	5	12	19	47	2
HY12-6	6	12	19	47	2
HY12-7	7	12	19	47	2
HY12-8	8	12	19	47	2
HY20-3	3	20	27	52.5	2
HY20-4	4	20	27	52.5	2
HY20-5	5	20	27	52.5	2
HY20-6	6	20	27	52.5	2
HY20-7	7	20	27	52.5	2
HY20-8	8	20	27	52.5	2
HY20-9	9	20	27	52.5	2
HY20-10	10	20	27	52.5	2
HY20-11	11	20	27	52.5	2
HY20-12	12	20	27	52.5	2
HY20-13	13	20	27	52.5	2
HY20-14	14	20	27	52.5	2
HY20-15	15	20	27	52.5	2
HY20-16	16	20	27	52.5	2
HY20-17	17	20	27	52.5	2
HY32-6	6	32	39	63.5	3
HY32-8	8	32	39	63.5	3
HY32-10	10	32	39	63.5	3
HY32-12	12	32	39	63.5	3
HY32-14	14	32	39	63.5	3
HY32-16	16	32	39	63.5	3
HY32-18	18	32	39	63.5	3
HY32-20	20	32	39	63.5	3
HY32-25	25	32	39	63.5	3