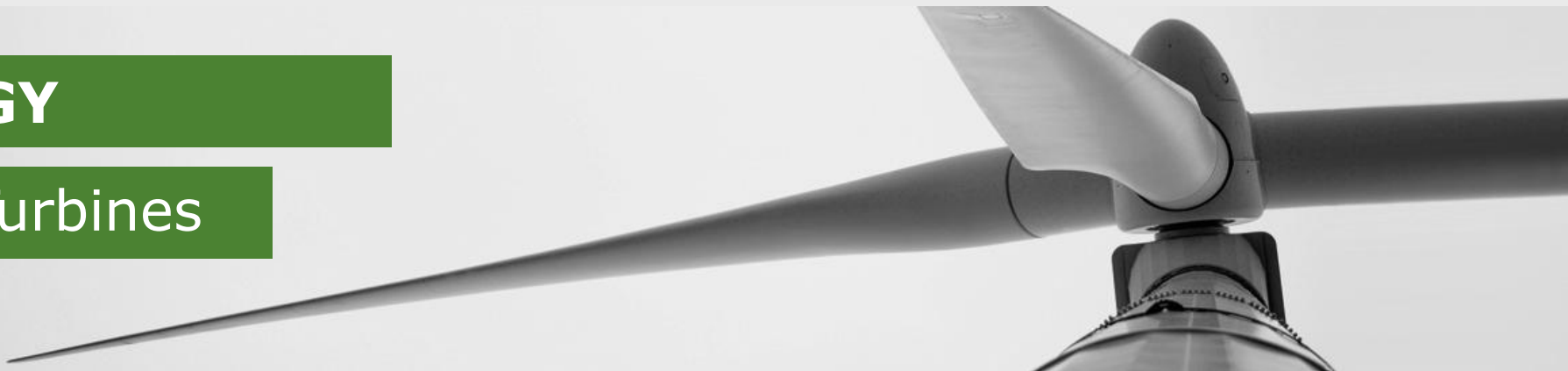


# ENERGY

## Wind Turbines



Rotor Hubs



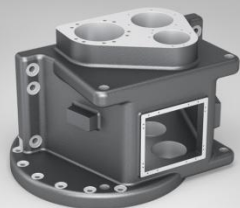
Main Frames



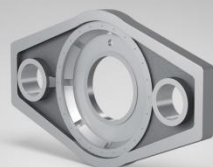
Slew Rings



Main Shafts



Gear Box Housings



Torques Supports

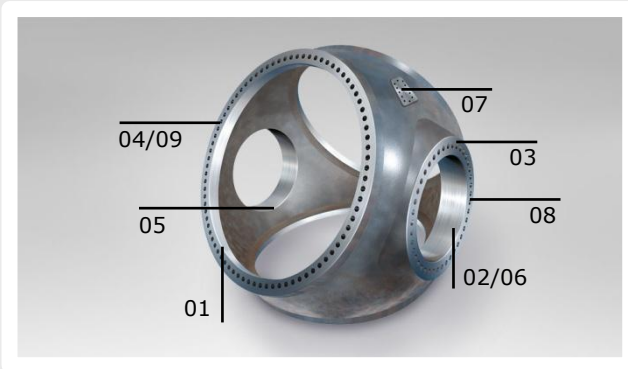


Gearbox Rings



Planetary Carriers

# Solutions for rotor hubs



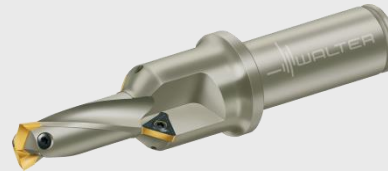
**01** Walter shoulder milling cutter Walter BLAXX F5141 for helical interpolation of large holes



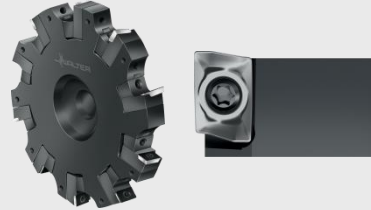
**02** Walter Xtra·tec® porcupine cutter F4238 for helical interpolation of small holes



**03** Walter heavy duty milling cutter F2265 for face milling around the holes



**04** Walter Xtra·tec® Point Drill B4012C for core hole drilling and chamfering



**05** Walter side milling cutter F2252 for back facing of large and small holes



**06** Walter Precision<sup>MAXI</sup> B3234 fine boring tool for finishing of large and small holes



**07** Walter Titex X·treme Step 90 solid carbide step drill for drilling small core holes

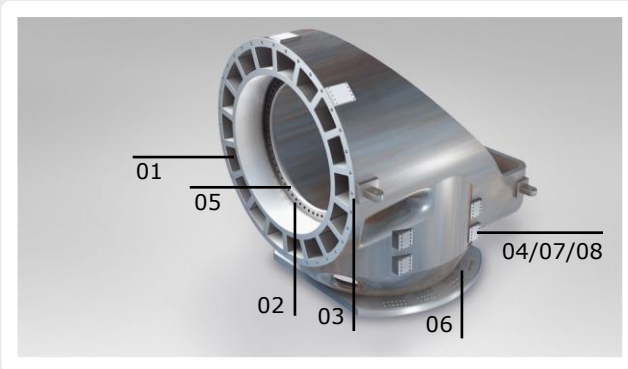


**08** Walter Xtra·tec® face milling cutter F4033 for countersinking large and small holes



**09** Walter Prototyp Paradur® Eco Plus for tapping

# Solutions for main frames



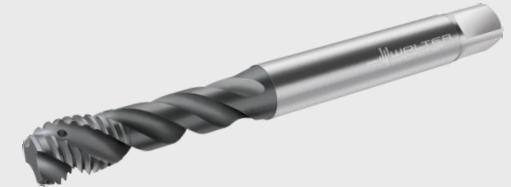
**03** Walter Titex Alpha® 4 XD-Technology for drilling of ventilation holes



**04** Walter Xtra-tec® face milling cutter F4033 for machining small faces



**07** Walter Titex X-treme Step 90 solid carbide step drill for drilling small holes



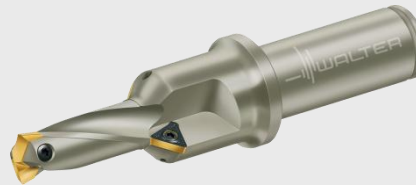
**08** Walter Prototyp Paradur® Eco Plus for tapping



**01** Walter heavy duty milling cutter F2265 for face milling



**02** Walter Xtra-tec® porcupine cutter F4238 for helical interpolation of main bore



**05** Walter Xtra-tec® Point Drill B4012C for drilling and chamfering mounting holes



**06** Walter side milling cutter for roughing of bearing surfaces and rear sides

# Solutions for slew rings



**01** Walter double turning tool holder for machining the inner contour



**02** Walter module milling cutter for milling of internal teeth

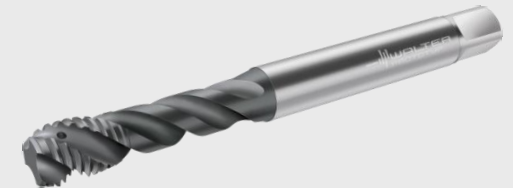


**05** Walter Xtra-tec® side milling cutter F4253 for milling of stress relief groove

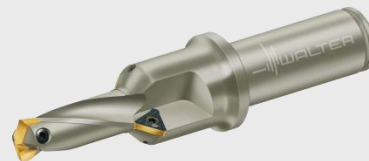
**Tiger-tec®Silver**



**03** Walter Tiger·Tec® Silver ISO P generation for rough and finish turning

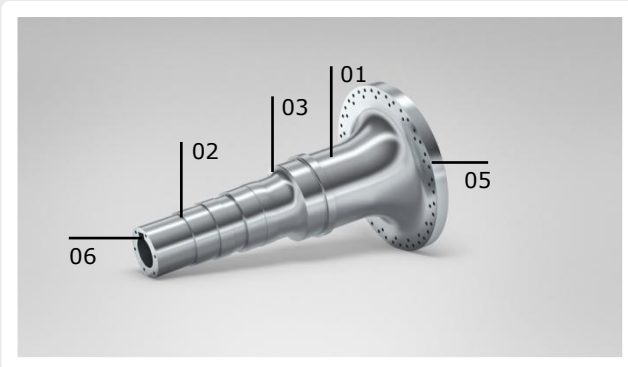


**06** Walter Prototyp Paradur® Eco Plus for tapping

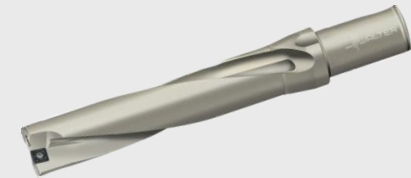


**04** Walter Xtra-tec® Point Drill B4012C for drilling and chamfering the mounting holes

# Solutions for main shafts



**03** Walter Capto™ for copy turning



**05** Walter Xtra·tec® Insert Drill B4215 for core hole drilling of the mounting holes

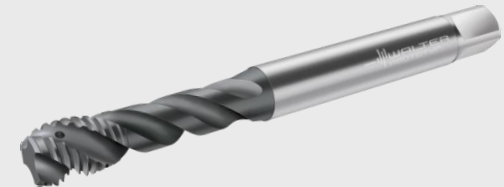


**01** Walter Capto™ for removing forged skin

Tiger·tec®Silver



**04** Walter Tiger·Tec® Silver ISO P generation for rough and finish turning

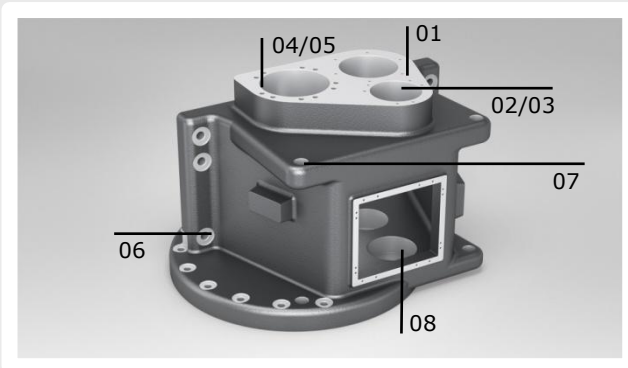


**06** Walter Prototyp Paradur® Eco Plus for tapping



**02** Walter Capto™ for finish turning

# Solutions for gear box housings



**03** Walter Precision<sup>MAXI</sup> B3234 fine boring tool for finishing of holes



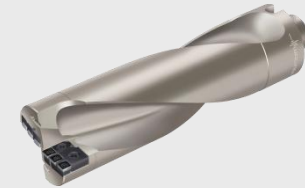
**06** Walter Xtra·tec® Point Drill B4012C for drilling and chamfering holes flange



**01** Walter Xtra·tec® face milling cutter F4033 for machining coupling faces



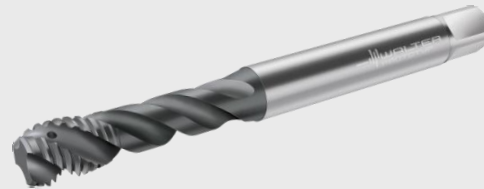
**04** Walter Titex X·treme Step 90 solid carbide step drill for drilling mounting holes



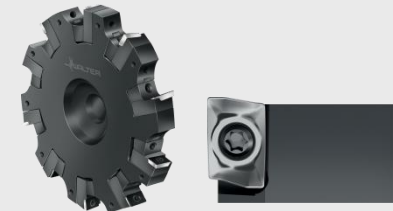
**07** Walter Xtra·tec® Insert Drill B4213 for drilling mounting holes



**02** Walter Boring<sup>MAXI</sup> B3220 boring tool for rough boring of holes

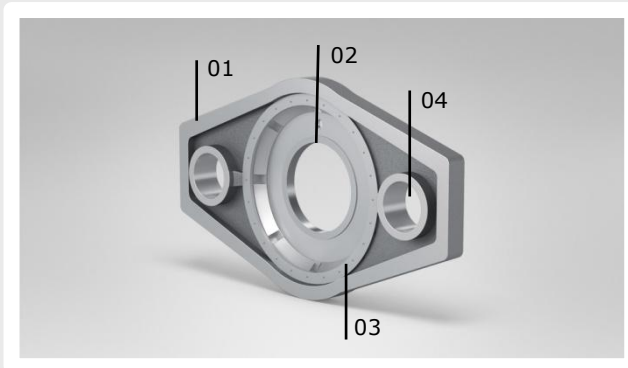


**05** Walter Prototyp Paradur® Eco Plus for tapping



**08** Walter side milling cutter F2252 for back facing of holes

# Solutions for torque supports



**02** Walter shoulder milling cutter Walter BLAXX F5141 for helical interpolation and 90° shoulder milling



**04** Walter Precision<sup>MAXI</sup> B3234 fine boring tool for finishing of core bores



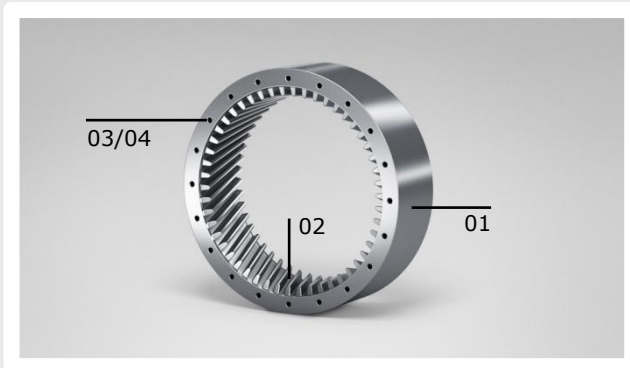
**01** Walter Xtra-tec<sup>®</sup> face milling cutter F4033 for surface roughing and finishing



**03** Walter Xtra-tec<sup>®</sup> Insert Drill B4213 for core hole drilling of mounting holes



# Solutions for gearbox rings



**02** Walter module milling cutter for milling of internal teeth



**03** Walter Xtra-tec® Insert Drill B4215 for short hole drilling of torque and fastening holes

**Tiger-tec®Silver**



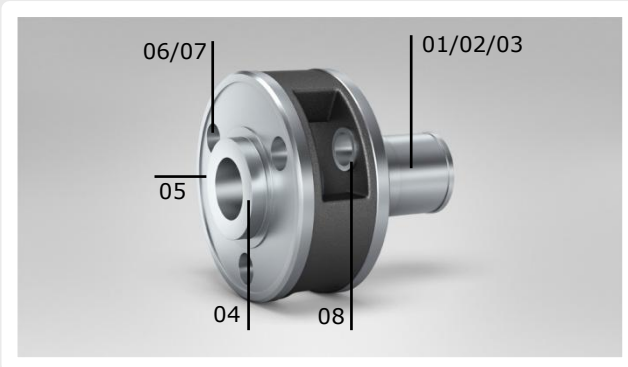
**01** Walter Tiger-tec® Silver ISO P generation for rough and finish turning



**04** Walter Xtra-tec® Point Drill B4010 for deep hole drilling of torque and fastening holes



# Solutions for planetary carriers



**01** Walter Capto™ for rough turning faces and shaft



**02** Walter Capto™ for finish turning faces and shaft

## Tiger·tec<sup>®</sup>Silver



**03** Walter Tiger·Tec<sup>®</sup> Silver ISO P generation for rough and finish turning



**04** Walter Xtra·tec<sup>®</sup> face milling cutter F4033 for machining faces



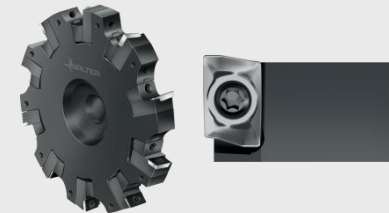
**05** Walter Xtra·tec<sup>®</sup> Insert Drill B4213 for drilling mounting holes



**06** Walter Boring<sup>MAXI</sup> B3220 boring tool for rough boring of large and small holes



**07** Walter Precision<sup>MAXI</sup> B3234 fine boring tool for finishing of large and small holes



**08** Walter side milling cutter F2252 for back facing of large and small holes