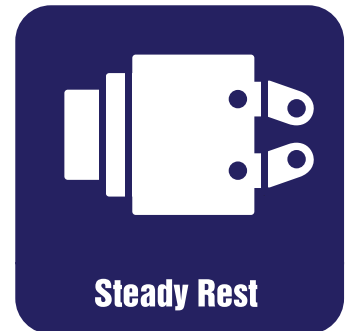


STEADY RESTS



STA (Self-Centering Steady Rest)

80.

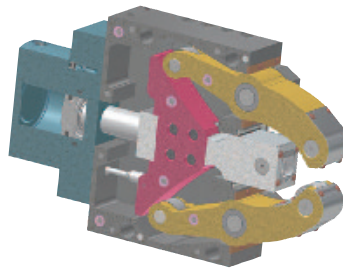
STRA (Wide-Opening Self-Centering Steady Rest)

82.

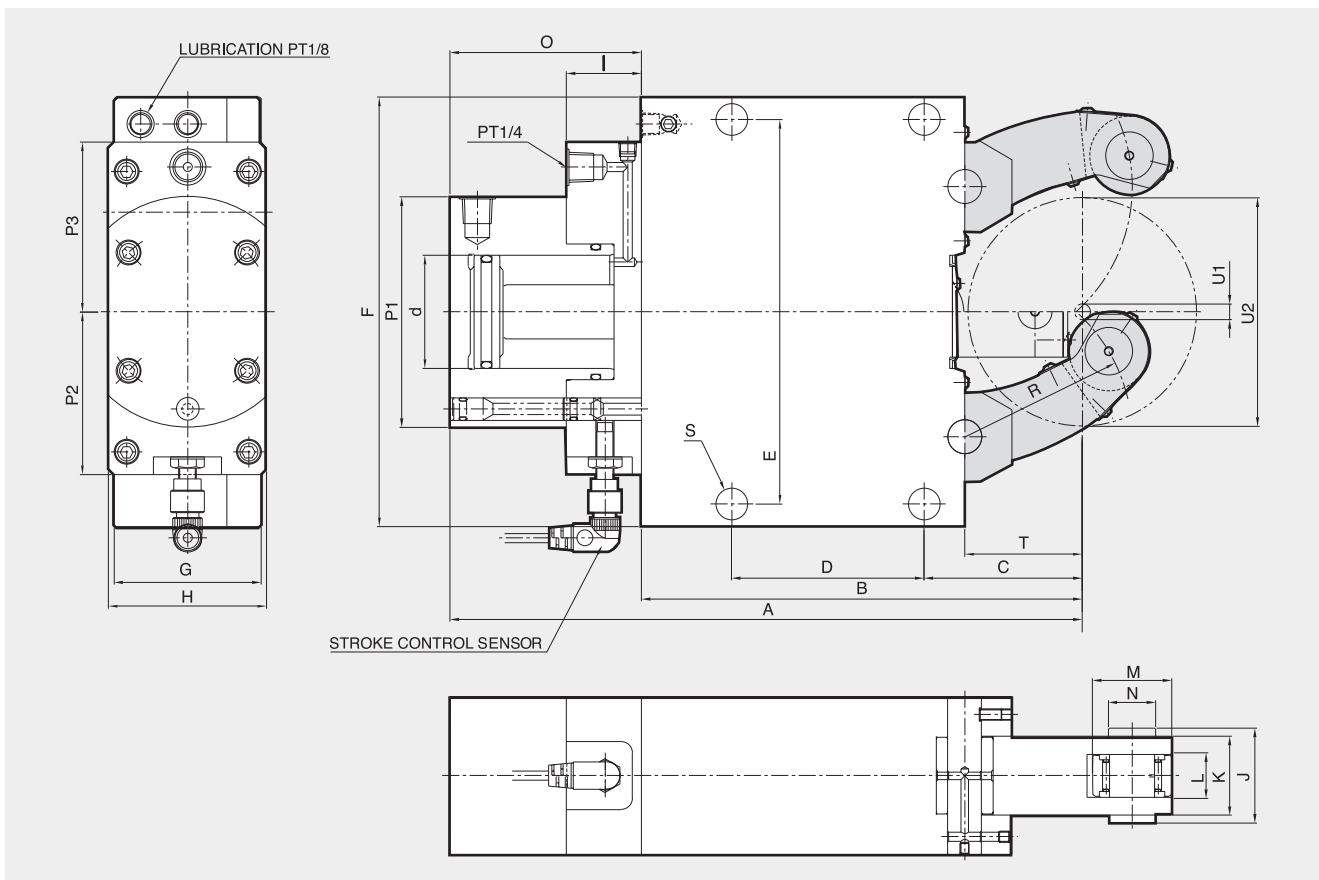
STA

Self-Centering Steady Rest

- Improves machining accuracy by supporting unstable, heavy or long workpieces
- The arms and center rollers are interconnected and designed to self-adjust to various size workpieces
- The mechanical design improves durability by eliminating the need for springs



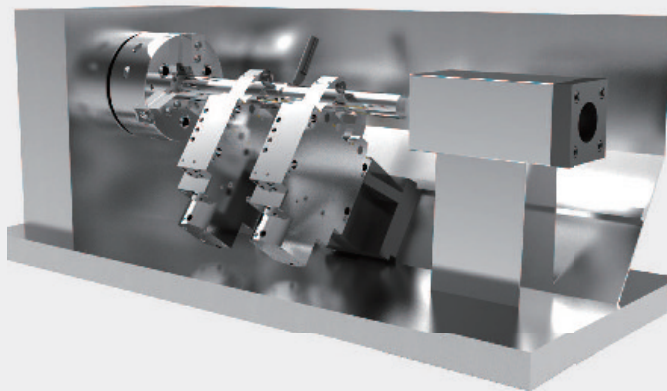
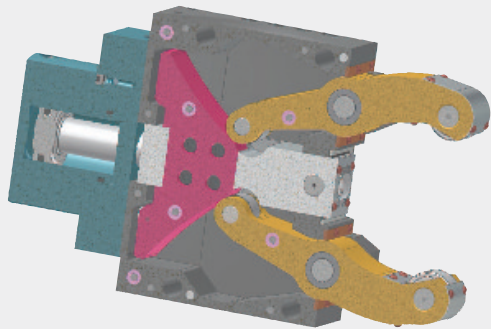
STEADY REST



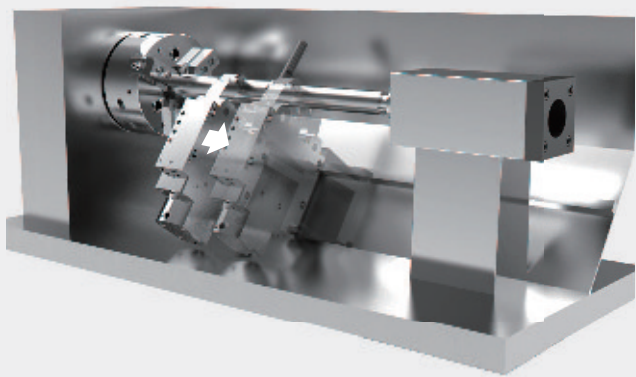
Dimensions

| | A | B | C | D | E | F | G | H | I | J | K | L | M | N | O | P1 | P2 | P3 | R | S | T |
|--------------|-------|-----|-----|-----|-----|-----|-----|-----|----|----|----|----|----|----|-------|-----|-----|-----|------|----|-----|
| STA-0464-1 | 207 | 137 | 51 | 64 | 118 | 132 | 55 | 70 | 33 | 24 | 20 | 12 | 19 | 6 | 70 | 84 | 66 | 66 | 50.5 | 11 | 37 |
| STA-0810-2 | 279.5 | 195 | 70 | 85 | 170 | 190 | 70 | 70 | 33 | 42 | 35 | 19 | 35 | 21 | 84.5 | 102 | 72 | 75 | 74 | 14 | 52 |
| STA-1215-3 | 431 | 312 | 115 | 135 | 262 | 290 | 85 | 100 | 37 | 52 | 45 | 25 | 47 | 25 | 120 | 137 | 90 | 100 | 119 | 18 | 85 |
| STA-2016-3.1 | 440 | 320 | 123 | 135 | 262 | 290 | 85 | 100 | 37 | 52 | 45 | 25 | 47 | 25 | 120 | 137 | 90 | 100 | 124 | 18 | 93 |
| STA-5020-3.2 | 455 | 335 | 138 | 135 | 262 | 290 | 85 | 100 | 37 | 52 | 45 | 25 | 47 | 25 | 120 | 137 | 90 | 100 | 139 | 18 | 103 |
| STA-3024-4 | 608 | 448 | 146 | 240 | 365 | 400 | 110 | 144 | 37 | 67 | 60 | 25 | 52 | 32 | 160 | 165 | 102 | 110 | 172 | 23 | 128 |
| STA-4531-5 | 697.5 | 510 | 178 | 270 | 400 | 440 | 145 | 144 | 37 | 83 | 75 | 29 | 62 | 36 | 187.5 | 165 | 102 | 110 | 209 | 23 | 160 |
| STA-8535-5.1 | 717.5 | 530 | 198 | 270 | 400 | 440 | 145 | 144 | 37 | 83 | 75 | 29 | 62 | 36 | 187.5 | 165 | 102 | 110 | 229 | 23 | 180 |
| STA-2546-6 | 944.5 | 709 | 215 | 330 | 640 | 680 | 145 | 158 | 37 | 83 | 75 | 29 | 80 | 42 | 235.5 | 190 | 115 | 130 | 290 | 27 | 175 |

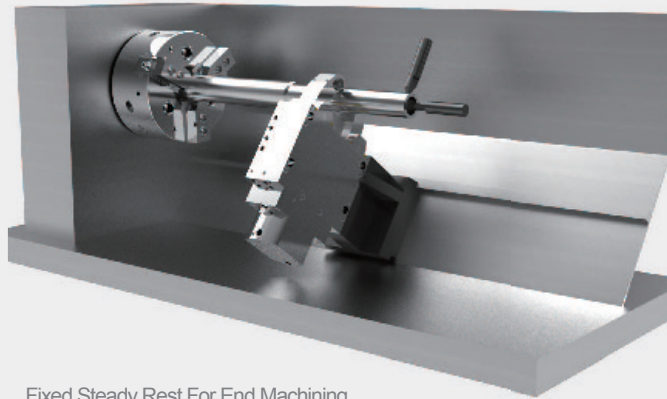
Fixed or Travelling Applications



Fixed Tandem Steady Rest



Travelling Steady Rest



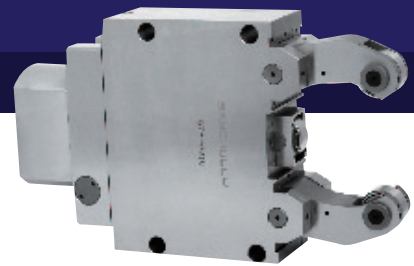
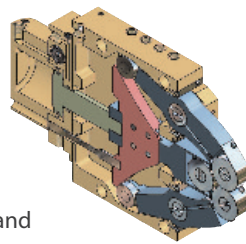
Fixed Steady Rest For End Machining

Specifications

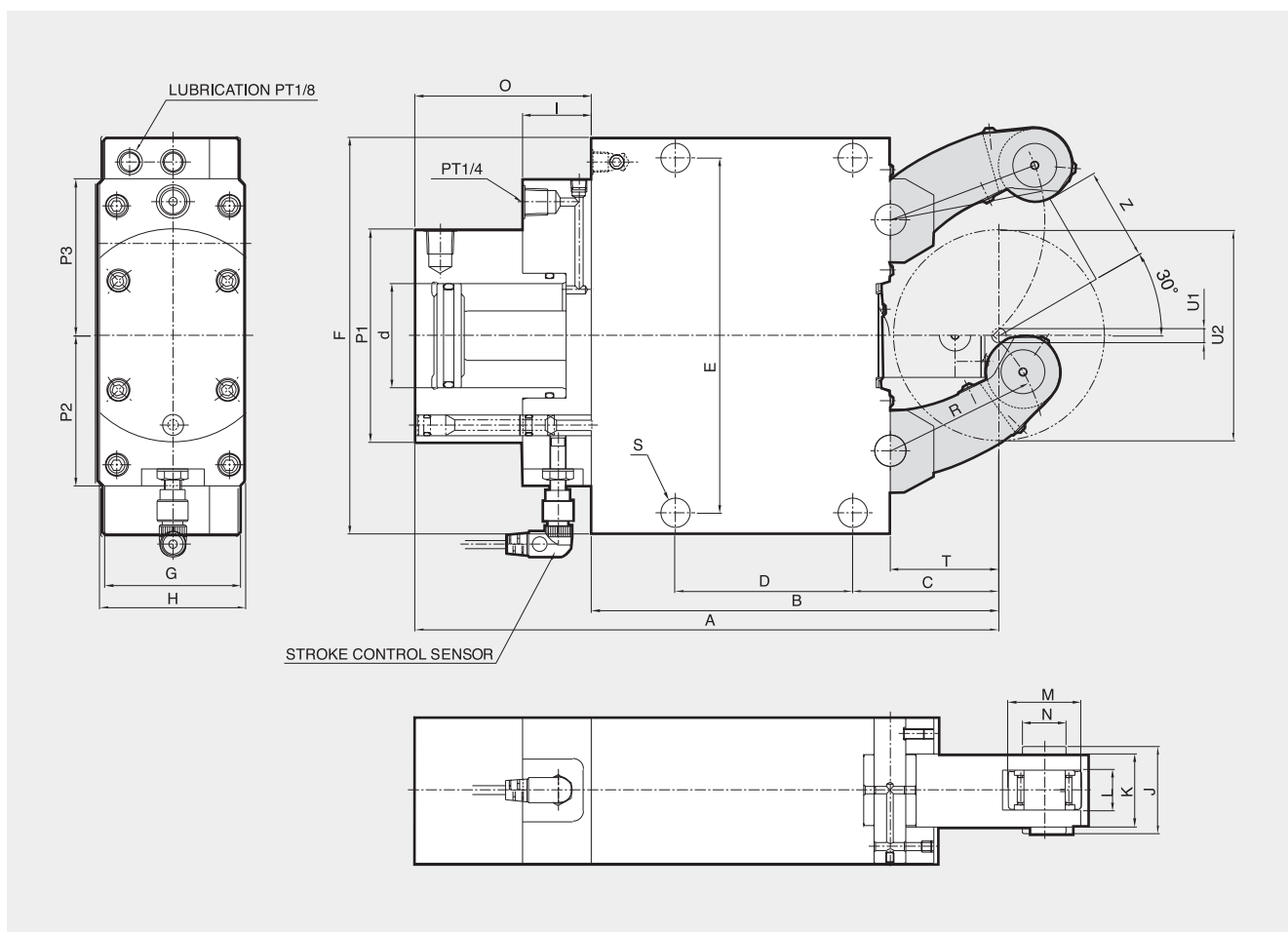
| | Piston Area (cm ²) | Max. Clamp Force / Roller (kgf) | Operation Pressure Max/Min (bar) | Centering Range (mm) | | Max. Roller Surface Speed (m/min) | Centering Accuracy (mm) | Repeatability Accuracy (mm) | Weight (kg) |
|--------------|--------------------------------|---------------------------------|----------------------------------|----------------------|-----|-----------------------------------|-------------------------|-----------------------------|-------------|
| | | | | Min | Max | | | | |
| STA-0464-1 | 7 | 100 | 6 / 50 | 4 | 64 | 800 | 0.02 | 0.005 | 6 |
| STA-0810-2 | 19.6 | 450 | 8 / 70 | 8 | 101 | 800 | 0.02 | 0.005 | 14 |
| STA-1215-3 | 50 | 1000 | 8 / 60 | 12 | 152 | 725 | 0.04 | 0.007 | 39 |
| STA-2016-3.1 | 50 | 1000 | 8 / 60 | 20 | 165 | 725 | 0.04 | 0.007 | 40 |
| STA-5020-3.2 | 50 | 1000 | 8 / 60 | 50 | 200 | 725 | 0.04 | 0.007 | 43 |
| STA-3024-4 | 78 | 1500 | 8 / 60 | 30 | 245 | 715 | 0.05 | 0.007 | 92 |
| STA-4531-5 | 78 | 2000 | 8 / 80 | 45 | 310 | 700 | 0.06 | 0.01 | 152 |
| STA-8535-5.1 | 78 | 2000 | 8 / 80 | 85 | 350 | 700 | 0.06 | 0.01 | 155 |
| STA-2546-6 | 132 | 3000 | 8 / 70 | 125 | 460 | 700 | 0.06 | 0.01 | 420 |

STRA

- Improves machining accuracy by supporting unstable, heavy or long workpieces
- The arms and center rollers are interconnected and designed to self adjust to various size workpieces
- Improves durability by eliminating the need for springs
- The wide opening arm of the STRA series facilitates the loading and unloading of components and makes automation possible

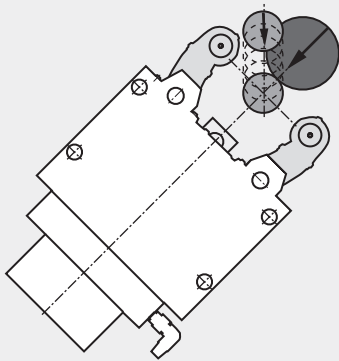


STEADY REST

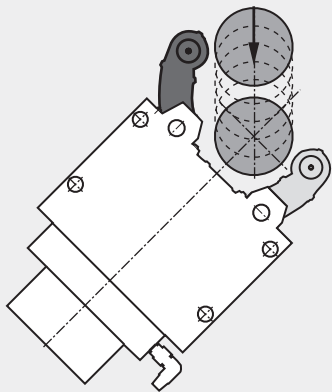
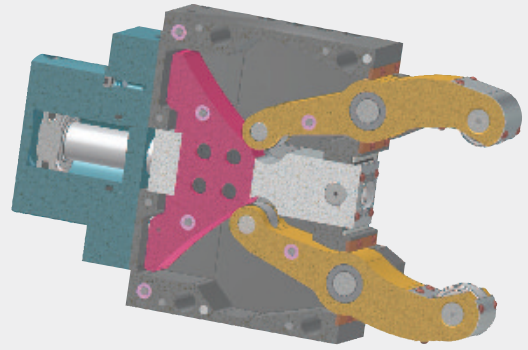


Dimensions

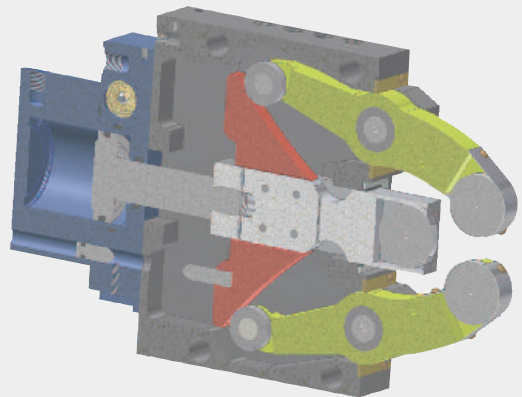
| | A | B | C | D | E | F | G | H | I | J | K | L | M | N | O | P1 | P2 | P3 | R | S | T | Z |
|-----------|-------|-----|-----|-----|-----|-----|-----|-----|----|----|----|----|----|----|-------|-----|-----|-----|------|----|-----|------|
| STRA-0452 | 207 | 137 | 51 | 64 | 118 | 132 | 55 | 70 | 33 | 24 | 20 | 12 | 19 | 6 | 70 | 84 | 66 | 66 | 50.5 | 11 | 37 | 26.5 |
| STRA-0880 | 279.5 | 195 | 70 | 85 | 170 | 190 | 70 | 70 | 33 | 42 | 35 | 19 | 35 | 21 | 84.5 | 102 | 72 | 75 | 74 | 14 | 52 | 41 |
| STRA-1213 | 431 | 312 | 115 | 135 | 262 | 290 | 85 | 100 | 37 | 52 | 45 | 25 | 47 | 25 | 120 | 137 | 90 | 100 | 119 | 18 | 85 | 66 |
| STRA-2215 | 440 | 320 | 123 | 135 | 262 | 290 | 85 | 100 | 37 | 52 | 45 | 25 | 47 | 25 | 120 | 137 | 90 | 100 | 124 | 18 | 93 | 76 |
| STRA-3022 | 608 | 448 | 146 | 240 | 365 | 400 | 110 | 144 | 37 | 67 | 60 | 25 | 52 | 32 | 160 | 165 | 102 | 110 | 172 | 23 | 128 | 111 |
| STRA-5026 | 688.5 | 510 | 178 | 270 | 400 | 440 | 145 | 144 | 37 | 83 | 75 | 29 | 62 | 36 | 187.5 | 165 | 102 | 110 | 209 | 23 | 160 | 135 |
| STRA-6046 | 944.5 | 709 | 215 | 330 | 640 | 680 | 145 | 158 | 37 | 83 | 75 | 29 | 80 | 42 | 235.5 | 190 | 115 | 130 | 290 | 27 | 175 | 230 |



■ STA
Conventional model



■ STRA
The wide opening arm of the STRA steady rest makes vertical loading and automation convenient



Specifications

| | Piston Area (cm ²) | Max. Clamp Force / Roller (kgf) | Operation Pressure Max/Min (bar) | Centering Range (mm) | | Max. Roller Roller surface Speed (m/min) | Centering Accuracy (mm) | Repeatability Accuracy (mm) | Weight (kg) |
|-----------|--------------------------------|---------------------------------|----------------------------------|----------------------|-----|--|-------------------------|-----------------------------|-------------|
| | | | | Min | Max | | | | |
| STRA-0452 | 7 | 100 | 6 / 50 | 4 | 64 | 800 | 0.02 | 0.005 | 6 |
| STRA-0880 | 19.6 | 450 | 8 / 70 | 8 | 101 | 800 | 0.02 | 0.005 | 14 |
| STRA-1213 | 50 | 1000 | 8 / 60 | 12 | 152 | 725 | 0.04 | 0.007 | 39 |
| STRA-2215 | 50 | 1000 | 8 / 60 | 20 | 165 | 725 | 0.04 | 0.007 | 40 |
| STRA-3022 | 78 | 1500 | 8 / 60 | 30 | 245 | 715 | 0.05 | 0.007 | 92 |
| STRA-5026 | 78 | 2000 | 8 / 80 | 45 | 310 | 700 | 0.06 | 0.01 | 152 |
| STRA-6046 | 132 | 3000 | 8 / 70 | 125 | 460 | 700 | 0.06 | 0.01 | 420 |

