



- Quick change rubber-steel segment collet
- Ideal for bar and shaft clamping
- Round, square and hexagonal collets available

APPLICATION CHUCK

Application Chuck

Power Chuck

Manual Chuck

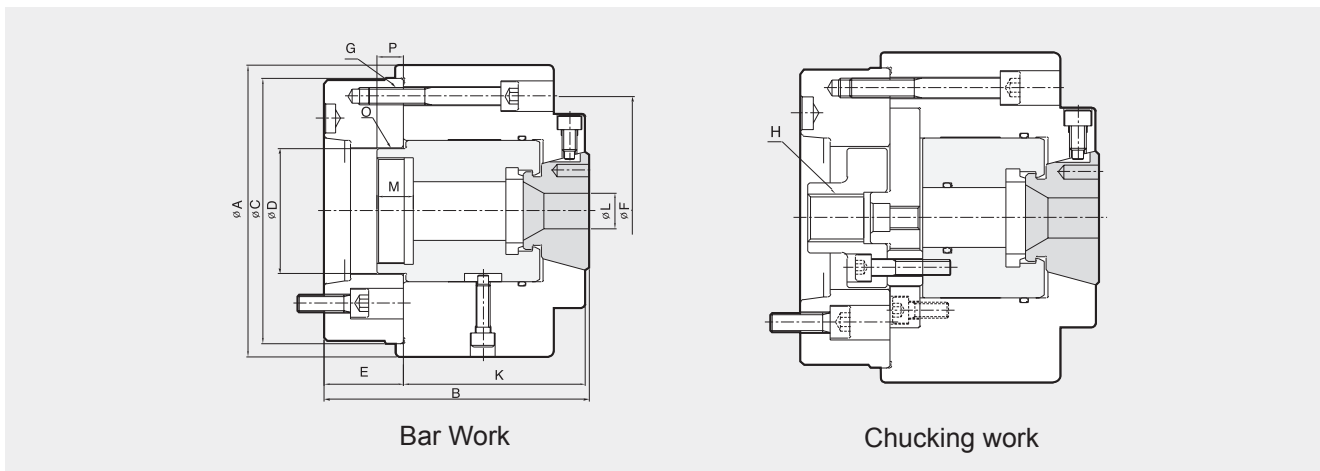
Rotary Cylinder

Steady Rest

NC Rotary Table

Vise

Replacement Accessories



Dimensions

	A	B	C(h)	D	E	F	G	H	K	Lmax.	Lmin.	M	O	Pmax.	Pmin.
COR-32	165	150	150	71	45	130	M10	M24	103	32	5	20.5	M60X2.0	16.5	13.5
COR-50	165	150	150	87	45	130	M10	M24	103	50	12	27.5	M74X1.5	23	20
COR-65	180	170	170	103	49	150	M12	M30	119	65	16	25	M90X2.0	25.5	22.5
COR-90	210	190	170	103	55	150	M12	M30	133	90	30	25	M90X2.0	28.5	22.5

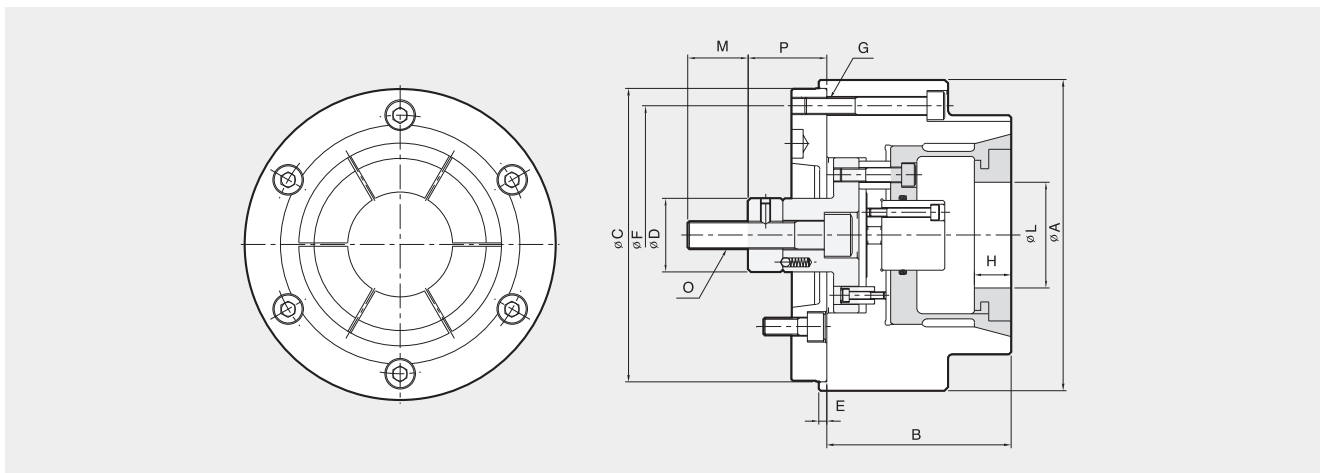
Specifications

	Clamping Force (kgf)	Max. Drawbar Pull (kgf)	Collet Expansion (mm)	Plunger Stroke (mm)	Chucking Diameter (mm)		Max. Speed (r.p.m.)	Weight (kg)
					Bar Work	Chuck Work		
COR-32	6400	3200	1	3	5~32	7~32	4500	25
COR-50	8200	4100	1	3	12~50	12~50	4500	25
COR-65	9200	4600	1	3	16~65	16~65	4000	32
COR-90	13300	6500	2	6	30~90	30~90	3500	38



- Interchangeable top jaws grip the workpiece O.D.
- Workpiece is pulled down to location for high accuracy machining
- Air sensing available
- Air / Coolant through the spindle available

APPLICATION CHUCK



Dimensions

	A	B	C(h')	D	E	F	G	H	Lmax.	Lmin.	M	O	Pmax.	Pmin.
CDO-06	165	115	150	35	5	130	M12	30	50	15	36	M16	26	23
CDO-08	210	125	200	42	5	180	M12	35	90	80	36	M20	32	29
CDO-10	250	145	230	52	5	210	M16	45	130	80	46	M24	35	32
CDO-12	300	170	230	52	5	270	M16	50	180	100	50	M24	36	32

Specifications

	Clamping Force (kgf)	Max. Drawbar Pull (kgf)	Collet Expansion (mm)	Plunger Stroke (mm)	Chucking Diameter (mm)		Max. Speed (r.p.m.)	Weight (kg)	GD ² (kgf·m ²)
					Max	Min			
CDO-06	2800	1500	1.6	3	50	15	4500	11	0.11
CDO-08	4600	2500	1.6	3	80	40	4000	23	0.44
CDO-10	6500	3500	1.6	3	130	80	3300	49	1.76
CDO-12	7500	4000	2.0	4	180	100	2500	67	3.10